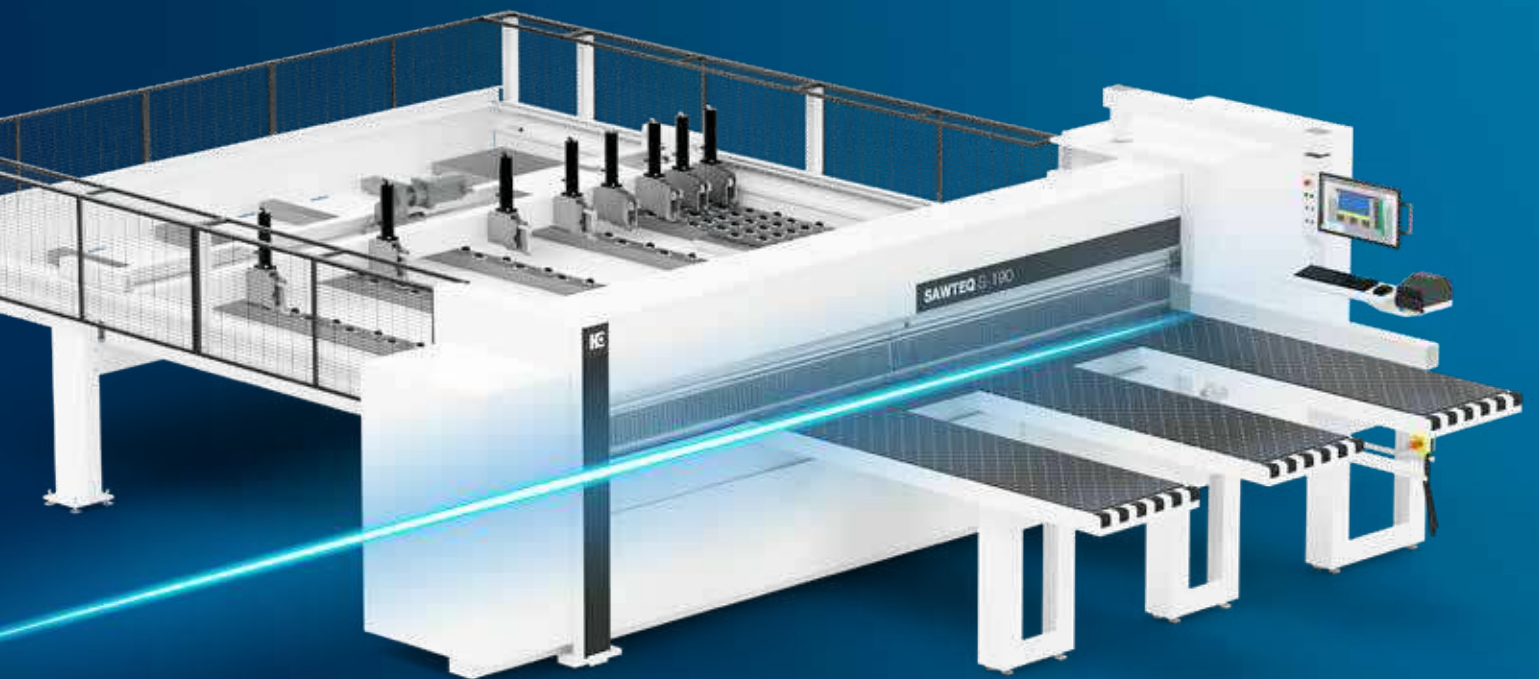


# SAWTEQ S-190

**Performance tailored to your needs.**  
Our panel dividing saw





## SAWTEQ S-190 – simply powerful

**Engineered in Germany. Built in Europe. Fast by you.**

The new SAWTEQ S-190 stands for maximum performance without unnecessary extras. It is designed to provide companies with a reliable, robust, and efficient solution that noticeably simplifies and accelerates daily production processes. Developed to the highest quality standards in Germany and built in Europe, it is made for everyday operation – and all in a compact machine design that is ideal even for limited floor space.

### YOUR SOLUTION

[MORE: HOMAG.COM](https://www.homag.com)



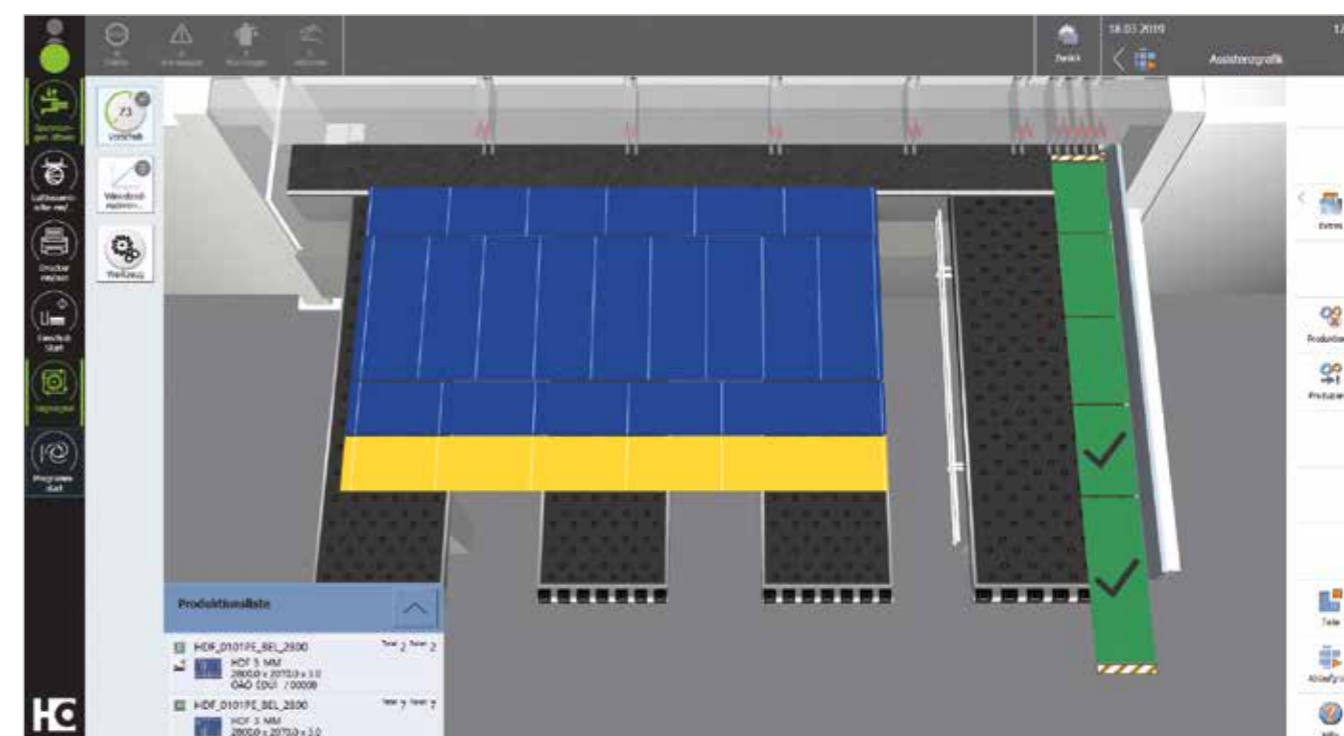
SAWTEQ S-190

### CONTENT

- 04 Software / Optional Features
- 08 SAWTEQ S-190
- 10 Standard features
- 14 LifeCycleServices
- 15 Technical data

## CADmatic 5 – intuitive to operate and open for digital networking

CADmatic 5 is the state-of-the-art, high-performance saw control system from HOMAG. A wide range of functions and easy to handle. This is ensured thanks to the intuitive operating concept and clear administrative functions. What's more, CADmatic 5 is open for communication with other machines and software solutions.



### CADmatic 5 – the change in perspective

The latest generation of the HOMAG saw control system has a 3D assistance graphic that clearly shows the machine operator all the cutting steps in order. It can be operated intuitively, which shortens the training time and reduces errors to a minimum.

### Highlights:

- Simple, intuitive and ergonomic machine operation thanks to the 3D assistance graphic
- This results in efficient processes and a steady output
- Uniform operating concept thanks to the powerTouch user interface
- All HOMAG saws with CADmatic 5 are automatically tapio-ready

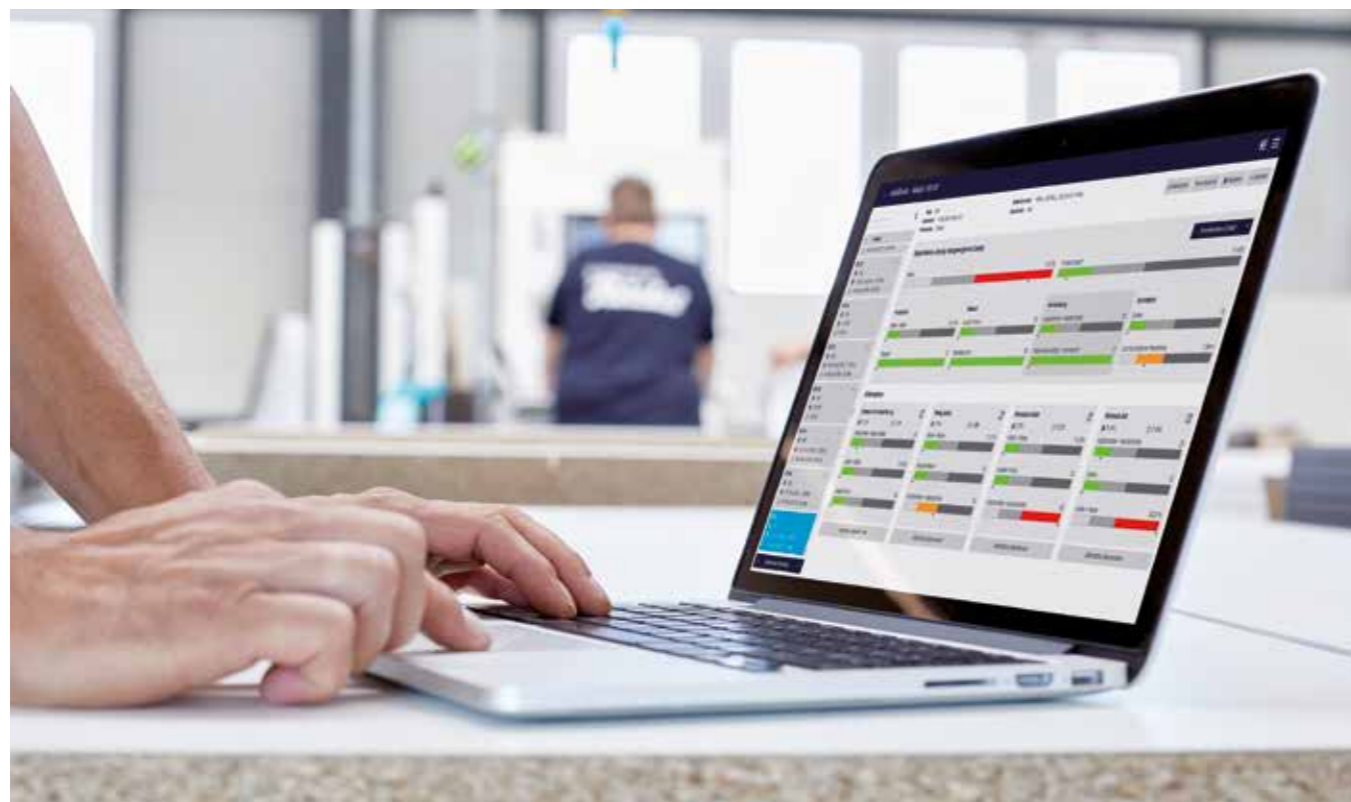
**Find out more in the „CADmatic“ brochure.**

### quickTip – the assistant for optimal use of the machine functions

quickTip is a new assistance function integrated into the HOMAG saw control system for maximum quality, operating comfort and performance. It supports the machine operator by providing recommendations for optimal use of functions directly at the saw. The advantage is that the functions and parameters can be activated centrally at one single point in CADmatic – this simplifies work, ensures smooth processes and a uniformly high output.

## Optional features: increasing productivity with the appropriate cutting optimization software

Production time, material yield, parts handling and logistical process: efficient panel cutting with seamless processes requires intelligently optimized cutting patterns. For HOMAG saws, you can get the appropriate optimization solution on demand – from large to small, as permanently installed software or directly from the tapio cloud. You have the choice because the SAWTEQ S-190 is, like all HOMAG saws, tapio-ready.



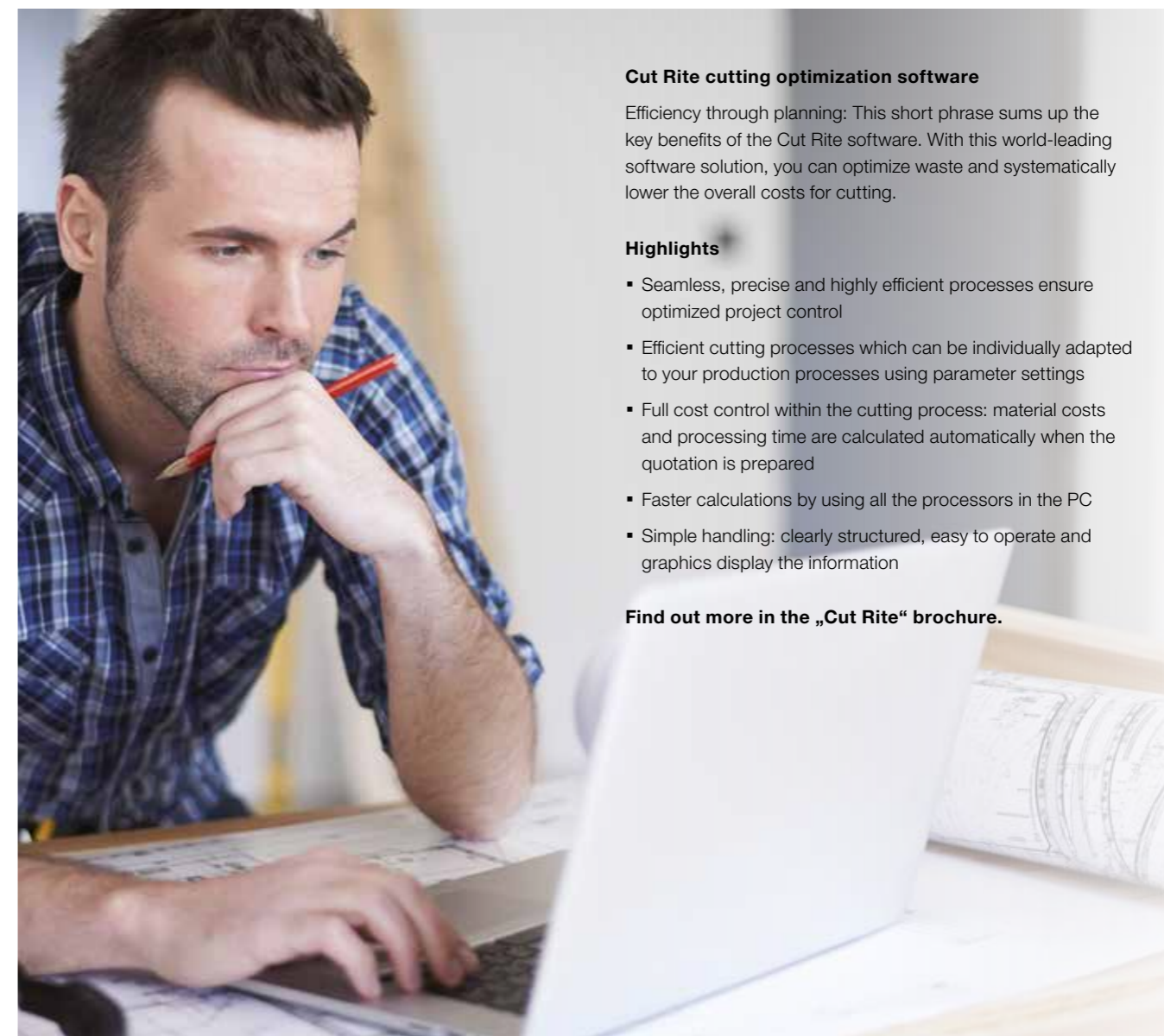
### intelliDivide – the easy way to first-class optimization results

Simply upload the parts list. Done! The result? A choice of several alternatives for cutting patterns and entire runs. That's how easy intelliDivide makes it.

In detail: the cloud-based optimization software intelliDivide utilizes significantly higher computing capacities than are available for locally installed optimization software and can therefore swiftly provide the user with several alternative optimization results.

This means that with intelliDivide the operator can choose from a variety of options, including results based purely on reducing waste, on the shortest machine time or on the simplest handling, perfectly adapted to the relevant requirements.

Applications are varied and are geared toward both woodworking shops and industry.



### Cut Rite cutting optimization software

Efficiency through planning: This short phrase sums up the key benefits of the Cut Rite software. With this world-leading software solution, you can optimize waste and systematically lower the overall costs for cutting.

#### Highlights

- Seamless, precise and highly efficient processes ensure optimized project control
- Efficient cutting processes which can be individually adapted to your production processes using parameter settings
- Full cost control within the cutting process: material costs and processing time are calculated automatically when the quotation is prepared
- Faster calculations by using all the processors in the PC
- Simple handling: clearly structured, easy to operate and graphics display the information

Find out more in the „Cut Rite“ brochure.

### CADplan – Cut Optimization Directly at the Saw

“Get even more out of it” is the motto. That's why HOMAG has brought the CADplan cut optimization software directly to the saw. Your advantage: Using CADmatic, you simply enter all part and panel lists for the current job or import the required lists in CSV format. CADplan then immediately generates optimized cutting patterns. This minimizes material consumption and boosts your overall productivity. The ideal solution for small to medium-sized production batches.

### CADlink – The Smart Connection to Your Optimization Processes

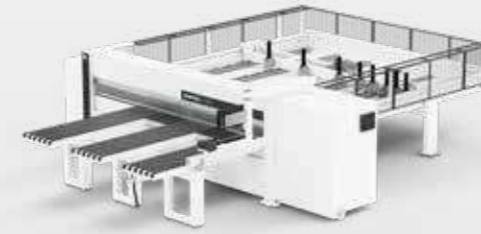
With the optional CADlink conversion program, the SAWTEQ S-190 integrates seamlessly into your existing software environment. CADlink reliably converts external optimization data—such as PTX or MDB cutting files—into the appropriate machine format.

This allows you to continue using your preferred optimization software while transferring the generated cutting patterns directly to the saw.

For you, this means maximum flexibility, fewer manual inputs, and a significantly more efficient data flow. Error sources are reduced, processes accelerate, and your production benefits from a fully digital workflow – from the office all the way to the machine.

## SAWTEQ S-190

With the SAWTEQ S-190, you can respond quickly and flexibly to new requirements – thanks to its short delivery time and proven HOMAG technology. The 95 mm saw blade projection enables high throughput when cutting packages, ensuring maximum efficiency in your daily production.



### Highlights

- 95 mm saw blade projection
- HOMAG CADmatic 5 control software
- Saw carriage speed up to 120 m/min



## The standard version is more than the sum of its parts

Whether it's the patented side pressure device or the robust HOMAG clamps: the SAWTEQ S-190 offers impressive leading-edge technologies for your production process.



### Program fence for precision and dimensional accuracy

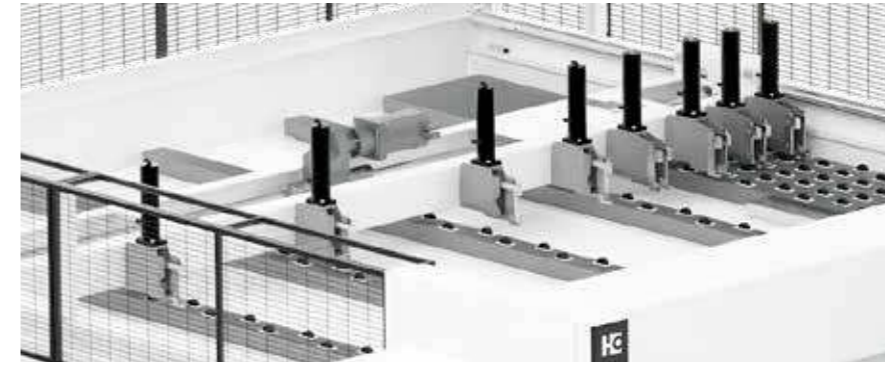
The compact, electronically controlled program fence with clamps and precision guides has an electro-magnetic measuring system that guarantees positioning accuracy of +/- 0.1 mm per meter – at travel speeds of up to 80 m/min. Even minimal trims and dust cuts are possible. The measuring system is entirely wear- and maintenance-free.



### Manual pressure control

The SAWTEQ 190 comes as standard fully prepared for cutting pressure-sensitive panels. You can adjust the pressure of the clamps and the pressure beam to suit your particular panel material by simply using the two manual controls conveniently located in the front operating area.

Illustrations may show the technical principle but not the precise machine variant described. Further optional features, for example, may be shown.



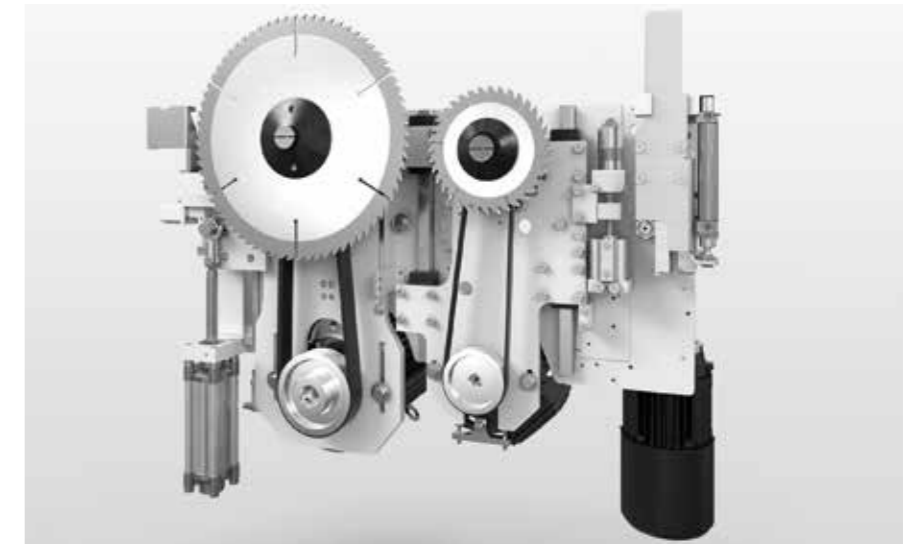
### Clamps: perfection down to the last detail

The robust HOMAG clamps position the material carefully and precisely at the cutting line. In total, the panel saw is equipped with 8 clamps: 4 two-finger clamps and 4 single-finger clamps.

### Saw carriage

The saw carriage is a robust steel construction with a main and a scoring saw as well as a central side pressure device.

- Infinitely variable saw feed speed
- High-precision, quiet and maintenance-free
- Saw carriage speed up to 120 m/min (optional)
- Equipped with IE3 motors
- Fast saw blade change thanks to Power-Loc



### HOMAG patent: central side pressure device

- Integrated directly into the saw carriage. This reduces the cycle times by up to 25% in comparison with conventional systems
- The contact pressure is infinitely variable – ideal for thin panels, laminates or sensitive materials



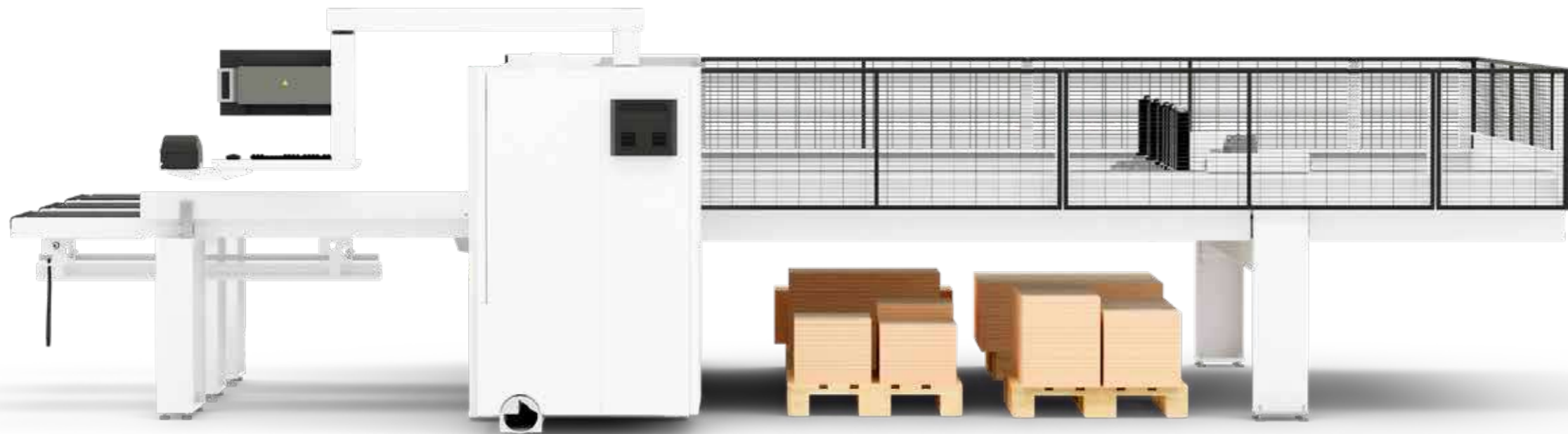
### Power-Loc

This quick-release system is very easy to use and speeds up blade changes on both main and scoring saw.

- Automatic adjustment of scoring saw blade

# SAWTEQ S-190 – More Space, More Order, More Productivity

With the SAWTEQ S-190, you make exceptionally efficient use of your available space. Its compact machine design ensures that every area is utilized to the fullest – even the space beneath the machine, which can be used effectively for temporary storage of finished workpieces. This keeps your workspace organized, reduces walking distances, and makes your entire material flow significantly more space-saving.



### Practical Storage – Flexibly Usable

The additional space beneath the machine gives you valuable storage exactly where you need it. Whether pallets, tools, pallet trucks, or other materials – everything can be stored neatly and kept within easy reach. Use this extra space according to your specific needs and discover the many possibilities for creating an even more efficient working environment.

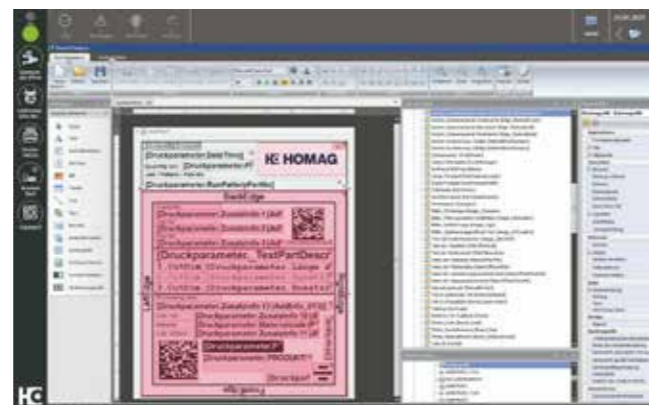
SAWTEQ S-190. Image may show optional equipment. Protective fence required.



### Labeling – Clearly Marked for Perfect Processes

With the labeling program, you can mark individual parts or entire stacks directly in sync with the cut, ensuring that all important information is reliably transferred to downstream machines.

In the layout editor, you design your labels exactly as needed – from text to graphics to freely selectable barcodes. The system generates the labels automatically in sync with the processing cycle, after which they can be applied to the workpiece.



### Part labeling combines clear processes with outstanding user-friendliness

To keep your workflow running smoothly even after cutting, HOMAG offers an integrated labeling solution that enables fast labeling and reliable identification at all subsequent stations. Positioned directly at the operator terminal and always within reach, the label printer is the ideal entry point: It transfers all process-relevant information reliably to the next work steps, ensuring transparency and safety throughout your entire production flow.



### Start-Stop Bar on the First Air-Cushion Table

The start-stop bar on the first air-cushion table allows for convenient program activation directly at the machine – completely independent of the operator panel. This provides noticeable relief, especially when handling large panels or long strips, as it reduces walking distances and makes workflows significantly more efficient.



### Optional: Air-Conditioning Unit

The optional air-conditioning unit ensures optimal operating conditions for the machine – even when ambient temperatures fluctuate. It keeps the electronic components reliably within the ideal temperature range, protects them from overheating, and thereby increases both the service life and operational reliability of your SAWTEQ S-190. With this additional option, you secure consistent performance and maximum availability, even in demanding production environments.

**Fast support:**  
94% resolution rate  
via our hotline

**Close to you:**  
1,350 service experts worldwide

**We get things moving:**  
Over 1,000 worldwide spare parts  
shipments each day

**No one else has that:**  
Electronic documentation on over  
150,000 machines, available in 28  
languages

## LIFE CYCLE SERVICES

Improved performance, more efficient processes, faster help, assurance of availability and smarter working. VAL YOU comes from VALUE ADDED. Our objective is derived from this name: We create added value for your business by helping you get the most out of your processes. Every day.

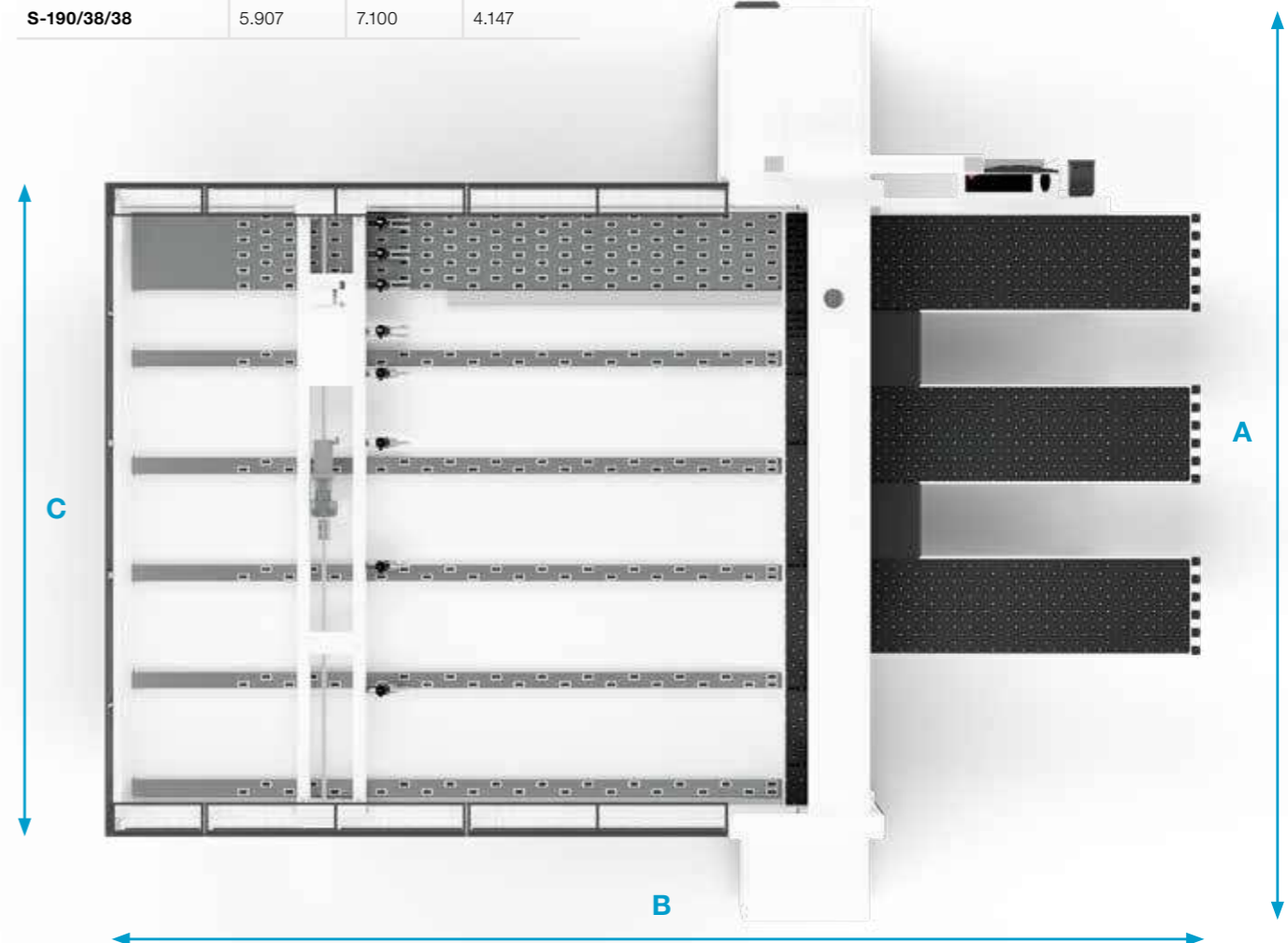
### TECHNICAL DATA\*

Model	SAWTEQ S-190
Saw blade projection (mm)	95
Cutting length (mm)	3.800
Program fence speed (m/min)	bis zu 80*
Saw carriage speed (m/min)	bis zu 120
Main saw motor (kW)	11
Scoring saw motor (kW)	1,5
Average total air requirement (NI/min)	200
Required compressed air supply (bar)	6
Dust extraction system (m³/h)	3.300 (26 m/sek)
Processing height (mm)	920
Air cushion tables (mm)	3 x 2.100 x 650
Monitor	21"-flatscreen display

\* Forward 25 m/min

### MACHINE DIMENSIONS

SAWTEQ S-190	A (mm)	B (mm)	C (mm)
S-190/38/38	5.907	7.100	4.147





**HOMAG Group AG**

info@homag.com  
www.homag.com

**YOUR SOLUTION**