

# SURFACE FINISHING SOLUTIONS

*in all fields of life*



**SURFACE FINISHING MACHINES AND SYSTEMS**

**KROMAŞ<sup>®</sup>**  
Better surfaces for life...

# KROMAŞ®

Better surfaces for life...

Kromaş, which adds value to our life and provides brightness, aesthetics and functionality to many things we touch, see and use, with its machinery and technology, was established in 1993 as the pioneer of the surface treatment industry in Turkey.

Kromaş, continues to work in an effort to make life easier and more enjoyable with the technologies and solutions it offers in surface processing.

The company describes the purpose of the technologies and solutions it produces as improving the surface of the parts it uses in our lives and adding value. Without being limited to these, we can summarize the desired results to be obtained in machines and processes as follows:

- Surface Polishing
- Deburring / Grinding
- Edge Rounding
- Surface Cleaning
- Degreasing
- Surface Ageing (Natural Stone)
- Surface finishing before coating

In addition to making the necessary technology and machinery production on its own in order to do these operations, it also carries out the production and development of consumables over 2000 kinds which are used for these operations in its own laboratories and production facilities.

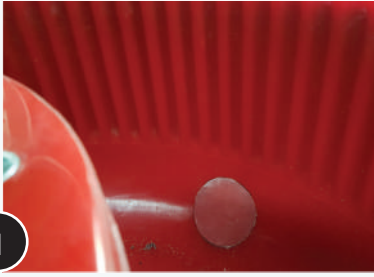
The machinery and consumables produced by Kromaş are successfully used in over 5,000 factories in 5 continents and 87 countries. Many of the more than 3,000 surface treatment processes developed by Kromaş are effectively applied in the world without any alternatives.

Kromaş, which has ISO 9001:2015 quality management system certificate also has CE certifications received from the world's major inspection organizations for all machinery groups. Kromaş, whose main approach is to add value to its customers and make life easier has made this philosophy a corporate culture with the motto of "Better Surfaces for Life" and has been continuing to develop it.



**Kromaş Turkey**





1

### POLYURETHANE LINING

The machines are lined with high corrosion free, long lived and high quality polyurethane.



2

### VIBRATION MOTOR

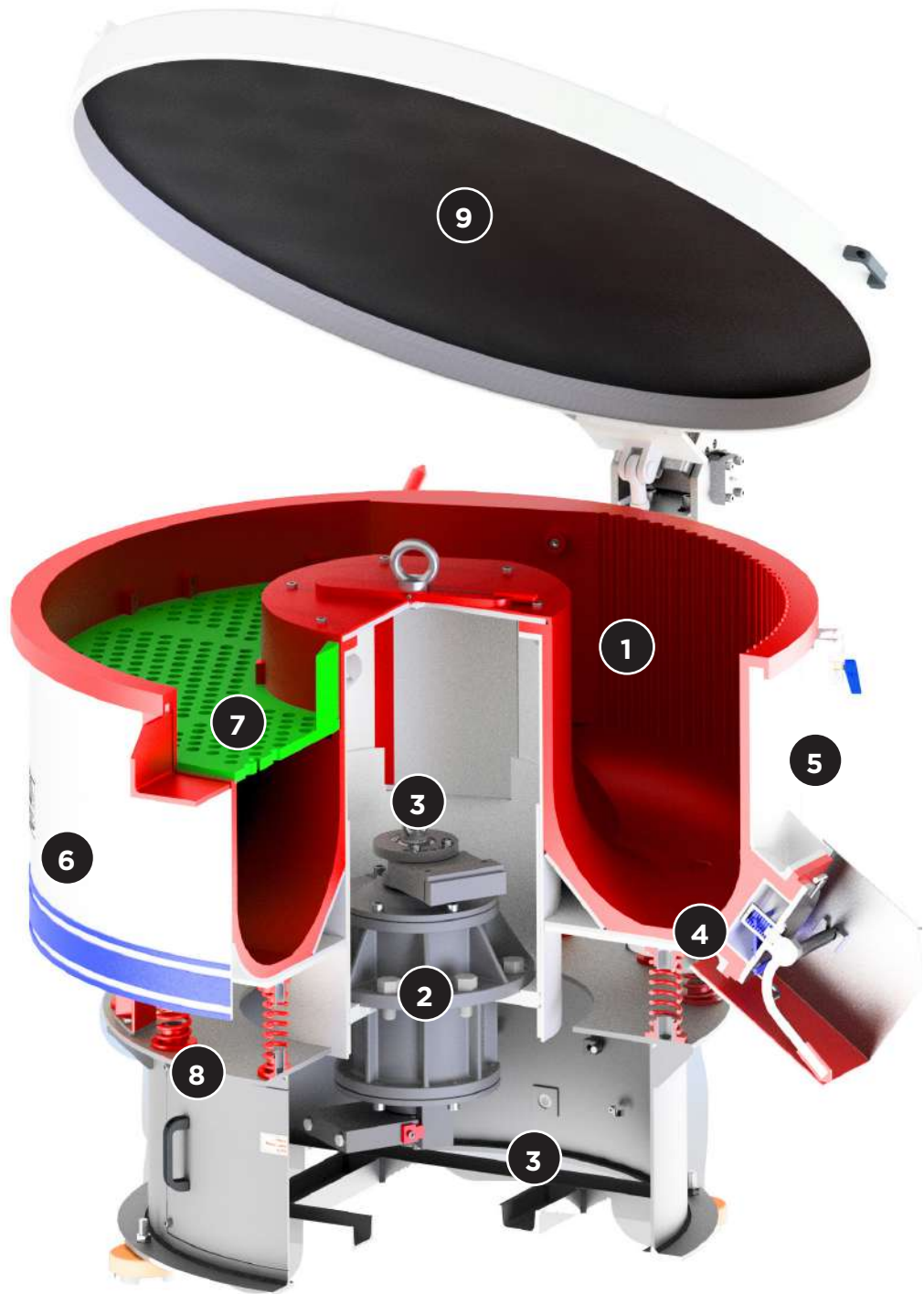
Our own design direct drive steel cased motors have special imported bearings and external lubrication system with high level performance.



3

### VIBRATION ADJUSTMENT

ADJUSTMENT  
Vibration amplitude can be observed from the vibration gauge on the bowl. Required vibration can be obtained by adjusting the weights. If an optional frequency converter is installed vibration and processing speed can also be controlled from the control panel.





4

### HEAT TREATMENT

All vibrating parts, in particular the metal bowl, are heat treated (normalized) during construction to avoid any stress fractures or metal fatigue due to the vibratory process.



7

### SEPARATORS

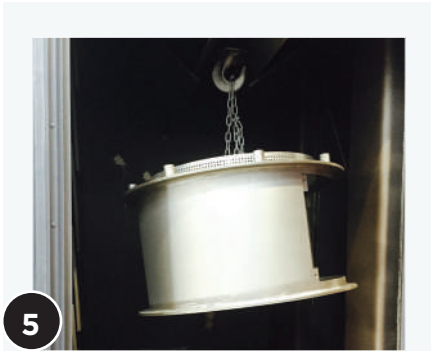
Media separators are made of long lasting polyurethane. Media separators for broken or undersized media are made of Stainless Steel. Separators can be changed easily and quickly in less than a minute.



10

### STANDARD CONTROL PANEL

Designed and manufactured using the best materials and are suitable to CE, EN, IP norm and standards.



5

### SHOT BLASTING

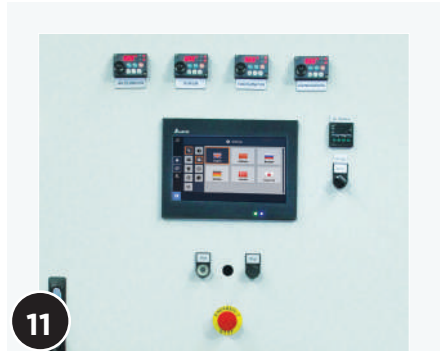
All metal surfaces are shot blasted for the added strength prior to lining and painting.



8

### SUSPENSION

Long life PU and steel springs are used in the vibratory machines. PU springs are used in models VM 125 and VM 250.



11

### PLC CONTROL PANEL

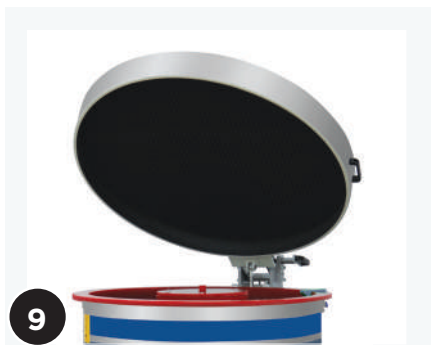
It is designed for automation systems and PLC control allows full process control.



6

### PAINT

After painting with epoxy primer and epoxy steel filler, the surfaces are then sprayed with two coats of epoxy paint and then oven treated.



9

### NOISE ISOLATION

The machines are the quietest vibratory machines on the market and if necessary optional acoustic lid or sound isolation cabin can be supplied.



### PRODUCTION STANDARDS

All machines and equipments carry the CE (European Union Safety Standard), VDE-IP Electrical Standard, ISO 9001 Quality Management System, EN 60204-1 Electric Standard, TSE Quality Certificate and GS Certificate marks.

# Round Vibratory Surface Finishing Machines

Kromas vibratory finishing machines are all around, flexible and efficient machines. Variety of industries are using Kromas machines successfully on daily basis. Vibratory finishing machines are used for finishing of metal, plastic, ceramic, stone, glass, wood and rubber products. Vibratory finishing process includes: deburring, radiusing, polishing, descaling, deflashing, degreasing, cleaning, smoothing etc.

Small or large, light or heavy, parts are successfully processed in variety of Kromas vibratory machines. Kromas customers benefits from large variety of material handling, automatic solution, drying and waste water treatment systems available to enhance their new or existing processes.

Kromas efficient process solutions are produced in test laboratory centers in Turkey. Results from test trials allow Kromas to offer to customers, best optimal machine systems, process and media. Selecting the correct machines by customer production requirement, use of high quality materials, high quality workmanship and engineering guarantee a low maintenance cost and long service life.

The models between VRX 125 - VRX 1500 have media separation systems.

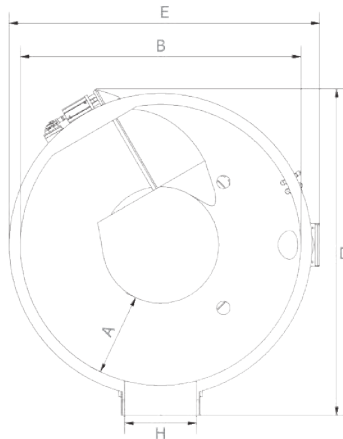
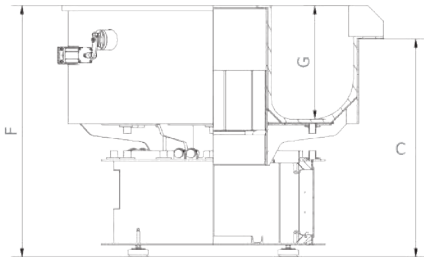


VRX 225

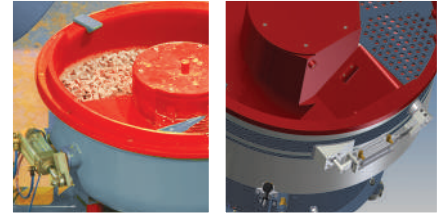




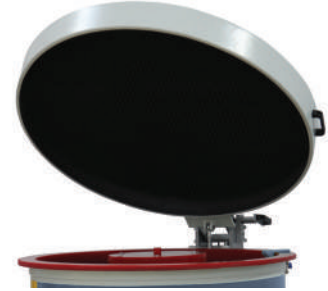
## VRX 1500



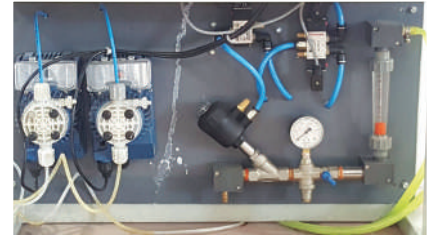
### Options - Accessories



Pneumatic Pedal System



Manual & Pneumatic Noise Cover



Compound Dosing System



Compound Dosing Pump



Control Panel

### ROUND VIBRATORY SURFACE FINISHING MACHINES

Machine Type	A mm	B mm	C mm	D mm	E mm	F mm	G mm	H mm	Capacity	Polyurethane Thickness mm	Steel Thicknessmm	Weight Kg.	Motor Cycle / at 50 rpm	Motor Power kW.
VRM2	59	221	251	257	257	251	88	-	2	7	3	11	3000	0,05
VRM20	108	400	570	465	478	569	190	-	18	20	-	60	3000	0,27
VRM50	150	580	745	680	680	964	220	-	42	30	-	160	1500	0,65
VRX125	203	790	841	1135	990	971	328	215	118	20	5	350	1500	1,1
VRX225	250	970	935	1320	1165	1090	430	250	228	20	5	465	1500	1,1
VRX350	300	1130	1005	1470	1330	1155	425	300	309	20	5	600	1500	2,2
VRX500	375	1364	1030	1720	1550	1200	520	380	570	20	5	790	1500	4
VRX800	430	1520	1125	1805	1705	1295	580	380	836	20	6	1310	1500	6
VRX1100	480	1640	1275	1910	1835	1470	657	420	1120	20	8	1550	1500	15
VRX1500	550	1790	1300	2145	2010	1510	668	460	1396	20	8	2140	1500	15
VRM2000	625	1975	-	2358	2182	1585	683	-	1700	20-30	10	2620	1500	15
VM3200	834	2325	-	2520	2470	1675	610	-	2400	25-35	10	2900	1500	22

\* VRM 125, VRM 225 and VRM 500 machine version are available for ball burnishing process with stainless steel media.

# Through / Tub Vibratory Surface Finishing Machines



From 20 litres to 2200 litres and more, Kromas is manufacturing Trough Vibratory Machines to fit your process application. Parts up to 2200 mm and bigger, can be processed in plastic or ceramic media, or with ball burnishing vibratory process.

Trough vibratory machines are ideal for processing of heavy, long bulky or delicate components which allow unlimited application possibilities.

Drive motors are mounted under the machine, directly to the bottom of the processing tub. Also, larger capacity units are driven by two motors mounted on the side of the tub. Drive motors and imbalance units are connected with unique vibration absorbing couplings.

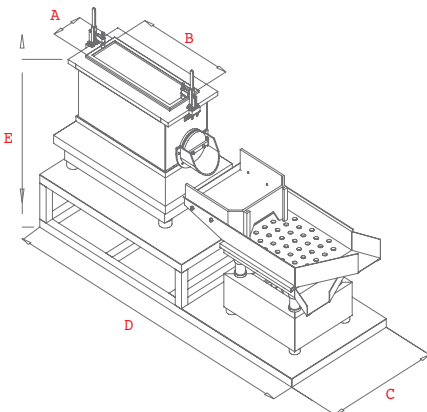


Processing tub can be divided into individual compartment. This is important for processing of delicate parts. Compartment can be filled with different media for step processing as well. Acoustic protection/ Sound covers are available and listed separately.

Kromas Vibratory Tub/ Trough machines are used in variety of industries. From the Automotive and Aerospace parts, to the Natural Stone and Wood industry. Kromas robust design of vibratory tub machines is recognized in "Stone" finishing industry. Tiles and pavers of various materials, size, and thickness are processed in these machines with short cycle time, desired finish and customer satisfaction.

## VM 20 Y GR

Capacity: 20 liter



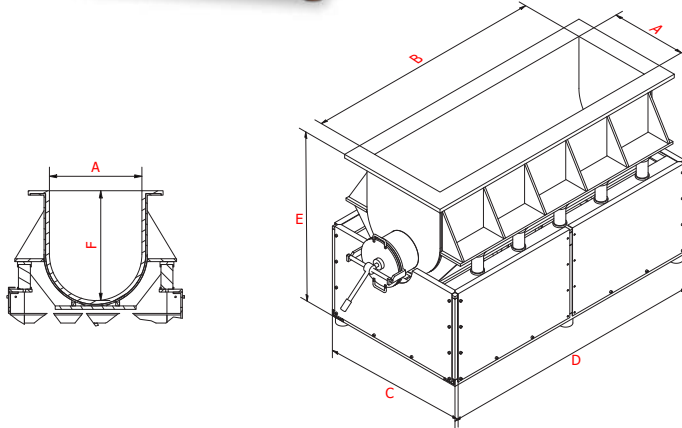
# VM 150 Y

Capacity: 150 liter



# VM 375 Y

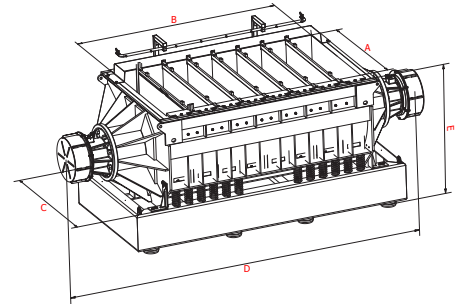
Capacity: 375 liter



VM 20 / 150 / 375 Y

# VM Y 2200

Capacity: 2.200 liter



## THROUGH/TUB VIBRATORY SURFACE FINISHING MACHINES

Machine Type	A mm	B mm	C mm	D mm	E mm	F mm	Capacity L.	PU Thickness mm	Weight Kg.	Motor Cycle rpm.	Motor Power kW.
VM20Y	170	530	425	710	540	235	20	15	125	1500	0,75
VM20 Y GR	170	530	600	1600	782	235	20	15	200	1500	0,75
VM35Y	220	590	360	635	620	305	35	15	160	3000	0,65
VM70Y	300	750	430	795	670	356	70	20	355	3000	2
VM150Y	365	870	715	1200	1070	490	150	20	496	1500	1,1/1,5
VM375 Y	500	1500	1190	1800	1120	570	375	20	1270	1500	4/6
VMY2200	1100	2200	1320	3900	1685	967	2200	25-35	4310	1500	15x2
VMY2200 L	1300	2200	1520	3900	1685	967	2500	25-35	4525	1500	15x2
VMY2400	1510	1600	1900	3115	2030	1370	2400	25-50	4545	1500	15x2

\* All through vibratory machines have version available for ball burnishing process with stainless steel media.

# Linear Vibratory Surface Finishing Machines



Kromas linear vibratory tub machines are allowing unlimited application possibilities. Kromas is manufacturing systems with automatic parts unloading and separation process. Manual and pneumatic noise protection covers are listed as optional machine equipment.

High throughput capacity, high profitability and unlimited automation possibilities are main characteristic of Kromas LNR vibratory continuous finishing system.



It is used in high volume production for finishing, deburring, radiusing in stamping, forging, die-casting processes. Kromas LNR systems provides unmatched reliability in operation.

Kromas LNR system provides unique operation safety with a design suited for occupational health and safety rules and its user friendly ergonomic structure.



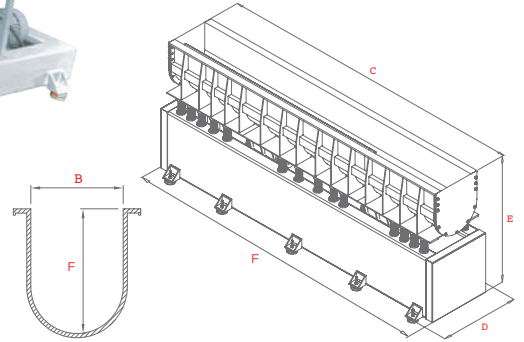
## LNR 2000

Capacity: 450 liter



# LNR 4000

Capacity: 900 liter



# LNR 6500

Linear Vibratory Surface  
Finishing System

	Capacity	Polyurethane Thickness	Proces Area Height	Proces Area Width	Proces Area Length	Width	Height	Length	Weight	Motor Cycle (At - 50hz)	Motor Power
Machine Type			A	B	C	D	E	F		d/d	kW
LNR 2000	450	20	594	448	2000	1074	1200	2445	1730	1500	6
LNR 4000	900	20	594	448	4000	1074	1200	6000	4500	1500	11
LNR 6500	1350	20	594	448	6000	2550	2200	8500	8125	1500	30

# Vibratory Drying Finishing Machines

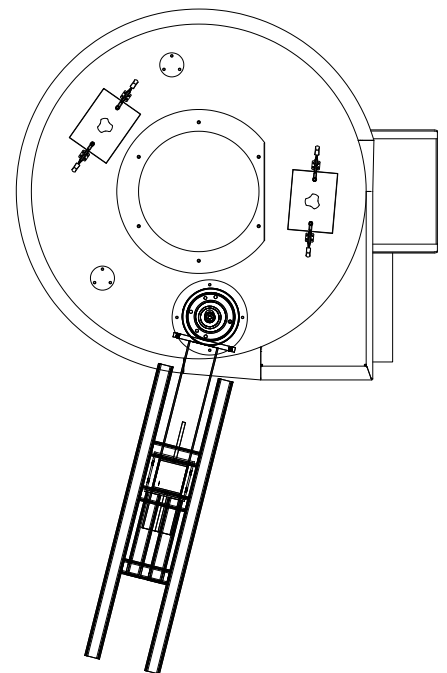


Vibratory Drying Machines are used for drying components/parts, after the vibratory finishing process. Round dryer is filled with drying media (corn maize of various sizes).

Wet parts are loaded continuously into the machine and travel around trough the process channel in pre heated drying media. Parts are separated via separation screen. Dryers with forced hot air are used for one cycle drying of parts.

Drying with granule after polishing process points out the surface polishing level. Our step dryer can dry parts which have different shape and geometry and aren't suitable to dry with granule.

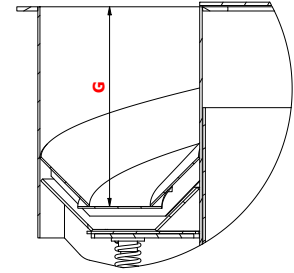
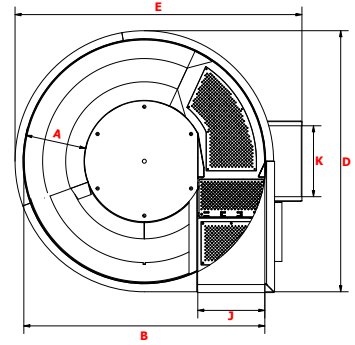
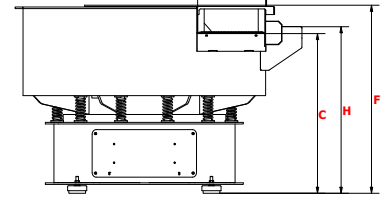
This process is suitable for fragile surfaces that drying with granule is unsuitable.



VRK 500 K-MPR  
Vibratory step/layer dryer with hot air blower (FKU)

# VRK 350K-F MPR

Capacity: 350 liter



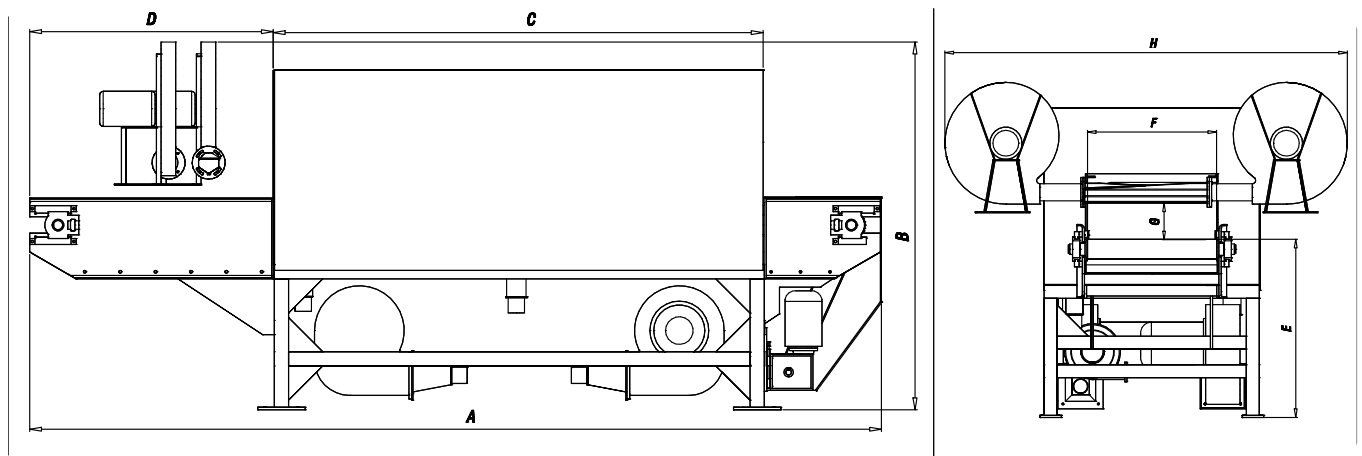
ROUND VIBRATORY DRYER MACHINES								
Machine type		VRK125 K F MPR	VRK225 K F MPR	VRK350 K F MPR	VRK500 K F MPR	VRK800 K F MPR	VRK1100 K F MPR	
Capacity	Litre	125	225	350	500	800	1100	
PU Thickness	mm	PU SPREY	PU SPREY	PU SPREY	PU SPREY	PU SPREY	PU SPREY	
Steel Thickness	mm	6	6	6	6	6	6	
Process Area Width	mm	A	255	295	345	380	450	490
Inner Diameter	mm	B	990	1130	1290	1510	1750	1890
Discharge Height	mm	C	750	850	930	1005	1160	1260
Width	mm	D	1125	1220	1400	1620	1865	2002
Length	mm	E	1230	1395	1585	1800	2055	2205
Height	mm	F	860	970	1080	1170	1370	1470
Process Area Height	mm	G	335	409	474	534	632	672
Machine Input Height	mm	H	835	945	1020	1050	1205	1305
Outlet Chute	mm	J	275	320	385	420	495	565
Inlet Chute	mm	K	300	350	370	440	500	600
Weight	Kg		385	500	675	902	1540	1910
Motor Cycle	rpm		1500	1500	1500	1500	1500	1500
Motor Power	kW		1,1	2,2	2,2	4	4/6	4/6
Heater Power	kW		1,8	3	4	4,5	6	6

# Belt Drying Machines



## TNL 4000 C

Kromas belt dryers are used for drying of large and small parts that are prone to damage. Parts that have many holes of different sizes and heavy parts are ideal for this type of machine. Drying is achieved by temperature controlled hot air which is recirculated in drying chamber. Belt drying machines can optionally be equipped with air sprays to blow off water.



	Conveyor Speed	Process Area Width	Process Area Length	Discharge Height	Process Area Height	Width	Length	Height	Weight	Motor Cycle (At 50 Hz)	Total Power
	m/dak.	mm	mm	mm	mm	mm	mm	mm	kg	d/d	kW
		A	B	C	D	E	F	G			
TNL 4000	1-2,5	600	2000	830	170	1870	3610	1560	1740	1500	49
EKR 500x3000	1-2,5	500	2000	915	125	1345	3200	1690	520	1500	20

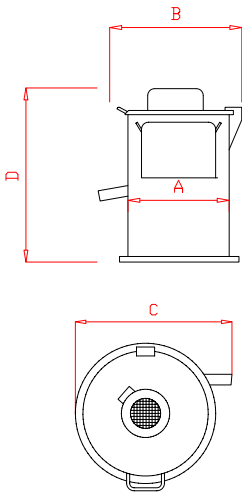
# Centrifugal Drying and Degreasing Machines



SK 50 K

SK 50 K / Inox

Kromas centrifugal dryers are used for stain free drying and degreasing of small to medium size parts and preventing parts of being tangled. Timer, heat isolation at top cover, automatic brake system which stops the machine when cover is open, and safety lock stands out our centrifugal drying and degreasing machines.



	Capacity	Inner Diameter	Width	Length	Height	Weight	Centrifuge Cycle	Motor Power	Motor Cycle (At 50 Hz)	Heating Power	Total Power
	litre	Ø mm	mm	mm	mm	mm	d/d	kW	d/d	kW	kW
		A	B	C	D	E	F	G			
SK25 Y	33	420	645	650	840	133	600	0,55	1500	-	0,55
SK50 Y	46	470	710	720	870	150	600	0,55	1500	-	0,55
SK25 K	33	420	645	650	840	138	500	0,55	1500	2	2,55
SK50 K	46	470	710	720	870	155	500	0,55	1500	2	2,55
SK100 K	100	476	920	1011	1443	250	400	1.1	1000	7.5	8.6

# Centrifugal Disc Finishing Machines

Kromas SM Series of centrifugal disc finishing machines are high energy machines. These machines have 10 times higher productivity when compared to round vibratory finishing machines.

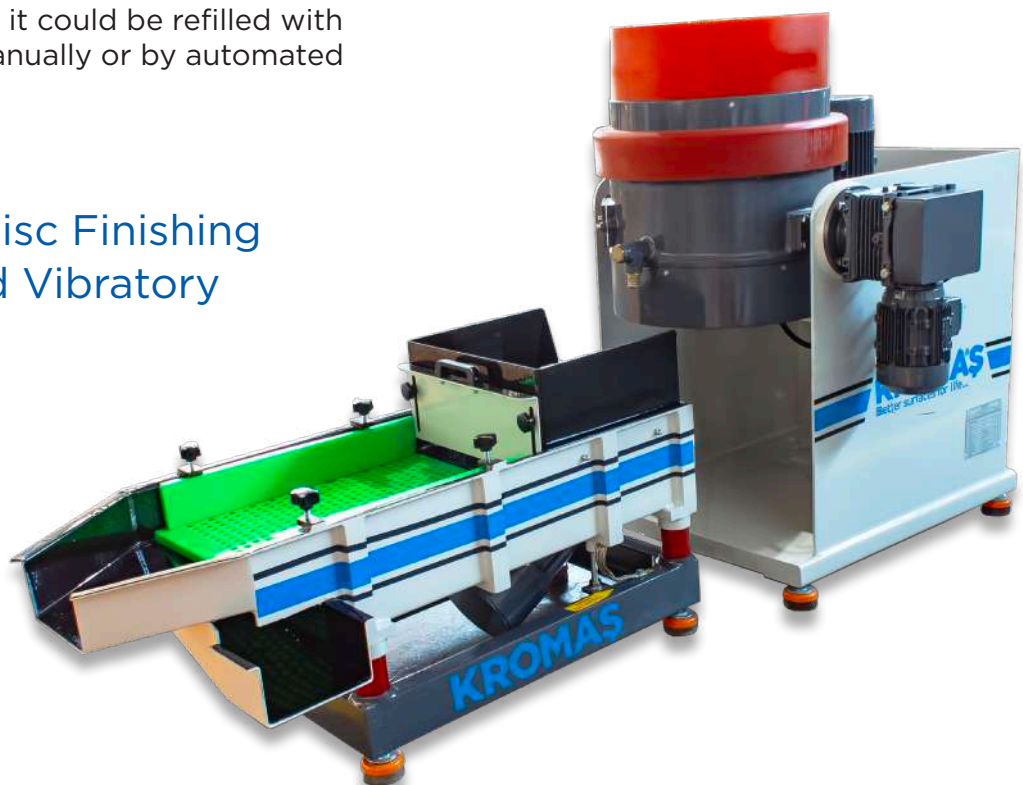
SM Machines have universal application, from high gloss polishing to aggressive deburring and radiusing. SM machines are stand alone processing machines. Machines can be equipped with manual tilting or electric tilting motor for easy parts unloading. Low machine configuration allows for easy visual control of a machine finishing process.

Kromas SM machines are fixed pivot centrifugal disc machines.

At the end of the centrifugal disc finishing process, the system pivots by 140 degree, thus transporting the mass of media and work pieces/parts on to the screening machine. There, separation takes place. When the SM centrifugal disc machine pivots back to processing position it could be refilled with media and parts manually or by automated system.

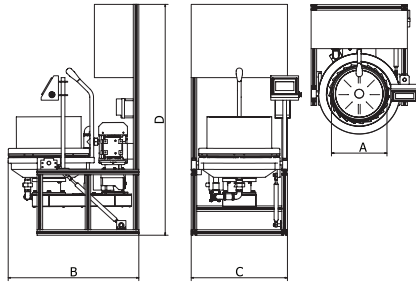


## Centrifugal Disc Finishing Machines and Vibratory Separator

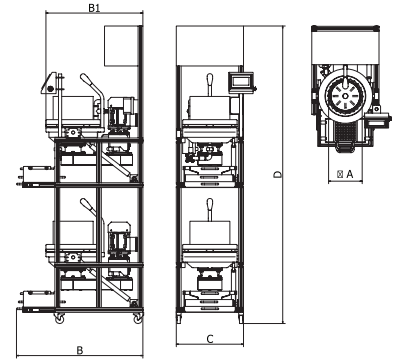




SM 7/20

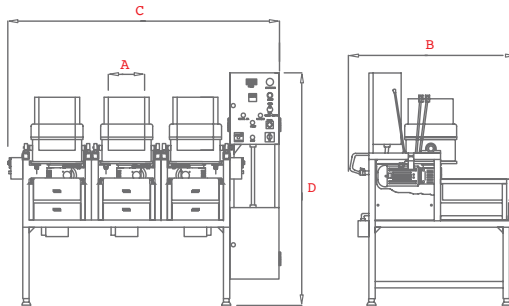


SM 2x7/2x20



SM 3x14

Capacity: 3x14 liter

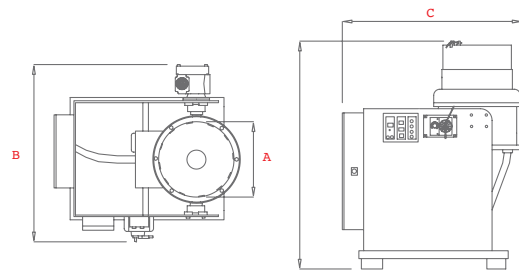


SM 14 / SM 2x14 / SM 3x14



SM 100 R

Capacity: 100 liter



SM 50 / SM 100 / SM 200 / SM 400

CENTRIFUGAL DISC FINISHING MACHINES

Machine type		SM 7	SM 2x7	SM 3x7	SM 14	SM 2X14	SM 3X14	SM 20	SM 2X20	SM 5 0C	SM 100 R	SM 200	
Capacity	litre	7	2x7	3x7	14	2x14	3x14	20	2x20	50	100	200	
Polyurethane Thickness	mm	20	20	20	20	20	20	20	20	20	20	20	
Process Area Width	mm	A	250	2x210	3x210	280	2x280	3x280	300	2x300	425	585	670
Length	mm	B	525	605	605	1140	1140	1140	808	705	1105	1380	1700
Width	mm	C	458	890	1335	1020	1500	3167	893	1090	950	1380	1655
Height	mm	D	437	1000	1000	1600	1600	1600	913	1250	1530	1510	1935
Weight	kg		70	130	195	150	300	450	240	200	303	790	985
Motor Power	kW		0,37	2X0,37	3X0,37	1.1	2.2	3.3	1.5	2x0.75	3	4	10

# Process Water Recycling Systems

Process water recycling systems which are produced by Kromaş and high quality are used for below purposes:

- Recycling of waste water that comes out of mass finishing machines (deburring, poishing etc.) by separating particules from water
- Cleaning of cold water that are used for processing of metal, optical glass, stainless steel, ceramic and other parts
- Recycling of precious metals and alloys

## Process Scope:

This process is physical cleaning of waste water that comes from the source. The system works with neutral waters (between ph 6.5 - 9.5).

## Processes that are made at the system:

- Flocculation
- Filtrasion
- Defoaming

## ARS 140 B 1000



# ARS 25 B 60

## APPLICATIONS:

These systems are produced to work with vibratory surface finishing machines, centrifugal surface finishing machines barrel type machines as a standard. As optional, it can be also prepared as a project for the waste water that occurs in different industries.



Machine Type	Unit	ARS25 B0	ARS25 B60	ARS25 MN500	ARS25 MN1000	ARS140 B1000
Capacity	Litre/Saat	300	300	300	300	1200
Clean Water Tank Capacity	litre	-	30	270	556	482
Waste Water Tank Capacity	litre	-	30	135	260	338
Total Tank Capacity	litre	-	120	405	816	820
Sludge Container Capacity	kg	2,5	2,5	2,5	2,5	22
Max. Clean Water Outlet Pressure	bar	0,5	0,5	0,5	0,5	0,3
Seperation Factor	g	1800	1800	1800	1800	2010
Centrifuge Speed	d/d	4100	4100	4100	4100	2750
Motor Power	kW	1,5	1,5	1,5	1,5	5
Total Power	kW	1,5	2	1,5	1,5	5,5
Measurements	mm	702x413x780	680x800x800	1560x760x1392	2060x1080x1392	2120x1275x1695
Total Weight	kg	115	160	290	335	620
Control Unit	-	Semi automatic	Semi automatic	Semi automatic	Semi automatic	Semi automatic
Chemical Dosing	-	-	Optional	Standart	Standart	Standart
Filtration	-	Centrifugal filter	Centrifugal filter	Centrifugal filter	Centrifugal filter	Centrifugal filter
Defoaming	-	Optional	Optional	Optional	Optional	Opsiyonel
Ratio of Water Recycling	%	95	95	95	95	95

# Surface Finishing Barrels



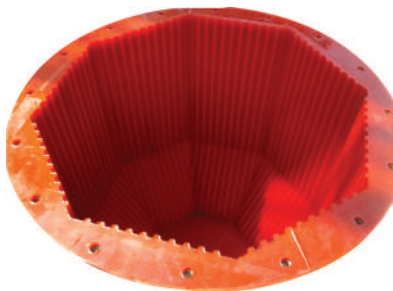
Process barrel of Kromaş DM 400 Surface Finishing and Polishing Barrel is lined with elasthomer polyurethane.

DM 400 is a versatile machine suitable for wet or dry barrel finishing processes.

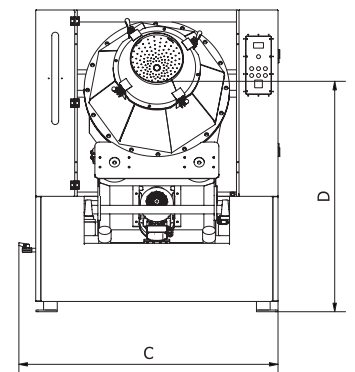
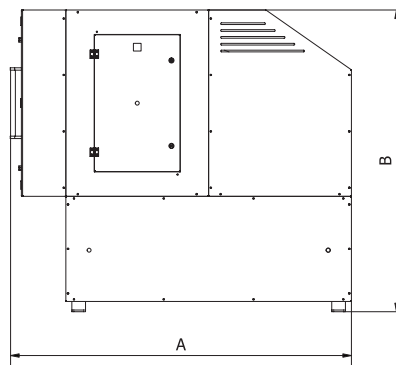
These barrels are designed for surface finishing of plastic and metal parts.

Internal polyurethane form of DM 400 Surface Finishing and Polishing Barrel is very efficient. It allows the users to have fast and economic production.

**DM 400**  
Capacity: 400 liter



Patented, special inner design to increase process efficiency



Capacity	Capacity	Height	Width	Process Area Height	PU Thickness	Steel Thickness	Rotation Motor Power	Centrifuge Cycle	Motor Cycle (At 50 Hz)	Water Inlet	Weight	
litre	mm	mm	mm	mm	mm	mm	kW	d/d	d/d	bar	kg	
	A	B	C	D								
<b>DM 400</b>	400	2240	1918	1256	950	15	6	4	1-40	1500	2-4	920

# Kromaş Cold Pu Kits



## Polyurethane Coating On Worn Surfaces

Cold Polyurethane, a special coating method, is a fast and effective process that can harden in 24 - 48 hours at room temperature without the need for an oven and does not require any mold.

Molds and industrial furnaces are needed to make full or local coatings in vibratory surface treatment machines. For this reason, the machines must be removed from the production areas for this process. This means loss of time and work and, of course, costs. With the Cold Polyurethane Kits offered by Kromaş, the coating process is carried out quickly and at low cost.

- No need of mold.
- No need for industrial furnaces
- No delivery cost or time.
- No labor and service cost.
- Fast, Practical and On-Site Application
- Competitive Price - High Performance
- Suitable for Every Brand and Model Machine

# Supplemental Equipments

## MAGNETIC SEPARATOR



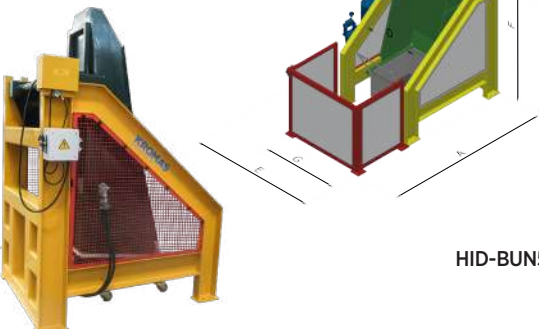
MAGNETIC BELT SEPARATOR  
TIP MS-3

Magnetic separators separate iron (ferric) or steel derived materials into VRM machines. They can perform separation with any size of consumable. It is a very efficient method of separation. Separation operation is very efficient especially in sheet metal and bolt type products. There is no processed product left in the vibration machines. With the demagnetization feature, it returns the magnetized part to its non-magnetized state.

A	B	C	D	E	F	Motor Power (kW)	Band Speed (m/dak.)	Magnetic Power (Gauss)	Band Thickness (mm)	Tabla Stroke (mm)	Magnetic Area Distance (mm)	Max. Material Weight (gr)	Machine Weight (kg)
1928	1051	1632	1199	2079	335	0,75	0 - 22	12000	4	300	80-90	200	670

## LOADING SYSTEMS

CHAIN DRIVEN  
HOPPER ELEVATOR LOADING SYSTEM

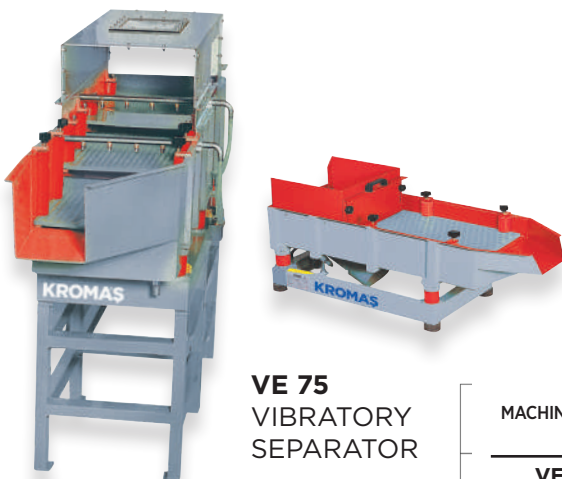


HID-BUN500

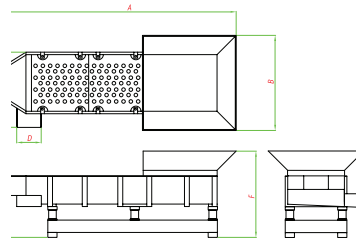
Vibrasyon ve Santrifüj makinelerine işlenecek parçaları yükleyen sistemlerdir. Hidrolik veya zincirli tipleri mevcuttur. Kendinden kovalı veya mobil kova yüklemeli modelleri mevcuttur. Yükleme kapasiteleri değişkendir ve tüm yüzey işlem makinelerine yükleme yapabileme özelliklerine sahiptirlerdir

A	B	C	D	E	F	G	Kaldırma Motoru (Kw)	Yürüyüş Motoru (Kw)	Kova Hacmi (Lt)	Kova Kaldırma Kapası tesisi (kg)
		300	810	1840		1200	1,5	0,75	250	1500

## SEPARERING



VE 75  
VIBRATORY SEPARATOR



VE 100  
VIBRATORY SEPARATOR

They are machines produced by using the separation feature of the vibration force. Although it is generally used with centrifuge machines, it can be used in many surface finishing processes. Two types are produced as VE50 and VE75 models.

There are also special-purpose wash-down versions.

MACHINE TYPE	A	B	C	D	E	F	Total Volume Lt.	Weight (kg)	Motor Speed (d.d)	Motor Power (Kw)	Voltage
VE50	1928	500	610	194	390	655	50	190	1500	0,75	380/50
VE75	1940	765	610	194	405	765	75	242	1500	0,75	380/50
VE100	2175	950	980	170	860	1285	100	385	1500	0,75	380/50

## CONVEYORS

### PVC BELT CONVEYOR



They are products used in system or group machine combinations. Special type PVC tape is used. Band speed can be adjusted. Conveyor height can be adjusted according to the desired size. Conveyor width 4mt. and can be produced in 2, 3, 4, 6 and 8 meters in length.

TİP	A	B	C	D	E	Band	Bant Speed (m/dak.)	Motor Power (Kw)	Weight (kg)
PVC-KON400X2000		850	1040	760	400	3	1-10	0,37	175
PVC-KON400X3000		850	1040	760	400	3	1-10	0,37	210
PVC-KON400X4000		850	1040	760	400	3	1-10	0,37	265
PVC-KON400X6000		850	1040	760	400	3	1-10	0,37	385
PVC-KON400X8000		850	1040	760	400	3	1-10	0,37	510

## TUNNEL WASHING

### TNY 3000

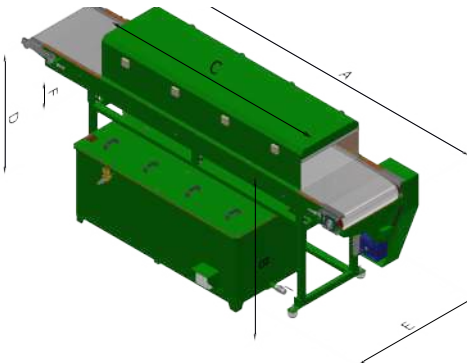


With TNY3000, it is very easy to wash or passivate parts of various sizes with chemicals. Washing is carried out by spraying the pressurized water coming from the pump on the materials with spray nozzles. AISI304 quality stainless mesh band used in the system allows the sprayed chemical to penetrate every area of the parts.

In TNY3000, 380 V, 50-60 Hz, 3 Phase AC electrical input is used. These values may vary by country. On request, electrical systems can be used according to different values. In TNY3000 tunnel washing machines, dirty, oily or metal or similar materials that have been deburred and polished are washed with water or chemicals under pressure.

The system consists of stainless mesh band, washing nozzles, spray pump and fan. The washing process occurs when the material passes through the spray zone with the nozzle at the adjusted speed. After the washing process, the waters on the materials are removed with the fan.

The pump is activated automatically when the system is running. It sprays from nozzles. Since the system operates in a closed circuit, water consumption is at minimum level.



TNY 3000	A	B	C	D	E	F	Motor Power (kW)	Bant Speed (m/dak.)	Jet Fan Motor (Kw)	Jet Fan Flow (M/h)	Rinsing Tunnel Length (mm)	Bant Width (mm)	Machine Weight (Kg)
	3452	1677		1032	868	280	0.55	1,1	0,37	1200	1000	545	615

For detailed information, please see the  
“Surface Finishing Consumables” brochure.



### CERAMIC MEDIA

Ceramic media is used for rounding sharp edges and corners, surface grinding of hard ferrous materials such as iron, steel and its derivatives. Ceramic media has different classes and each class has different usage purpose.

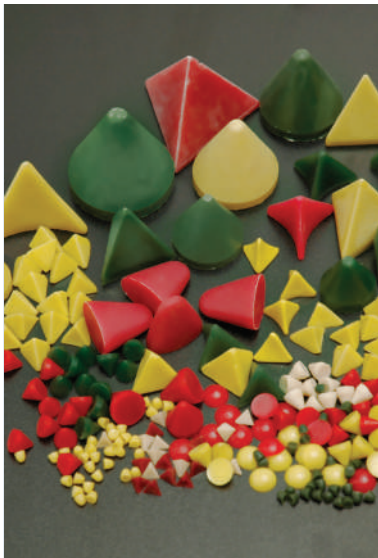
Media shape and class are determined according to part dimensions, shape, surface finishing quality etc.



### PORCELAIN MEDIA

This media has low porosity and high density. It is used for polishing of all metals and non-metallic parts.

Wearing out rate of this media is nearly 0.



### PLASTIC MEDIA

Plastic grinding media are used for the surface finishing of softer non ferrous materials such

as brass, aluminum, xamac, stainless steel and copper.

Plastic media also has different classes and each class has different usage purpose.

Media shape and class are determined according to part dimensions, shape surface finishing quality etc.





For detailed information, please see the “Surface Finishing Consumables” brochure.

## DRYING AND POLISHING GRANULES

**Corn cob granule:** This granule is completely natural and

used for drying and polishing processes. It absorbs water fast at high level.

**Nut granule:** It is used with suitable surface finishing pastes to reach high level polishing results of various metals.



## STAINLESS STEEL MEDIA

Stainless steel media with the appropriate compound are used for the burnishing process for most metals.

Stainless steel media has different shapes such as those, balls, pins, satellites etc.

Single shape or mix of different shapes can be used depending on part type.



## COMPOUNDS

Compounds are used with ceramic, plastic and porcelain media as liquid, powder and paste. The processes that are made with these compounds are metal cleaning, derusting, deoiling, deburring and polishing. Compound type is determined according to metal type and required surface quality.



# Applications

## DEBURRING

This process is a surface treatment applied to remove unwanted burrs and roughness on the surfaces of materials such as metal, plastic, wood, etc. during or after the production process.



## POLISHING / SMOOTHING

It is a surface treatment applied to obtain a shiny surface by improving the surface roughness on the surface of a product consisting of materials such as metal and plastic at the micron level. By means of this process, smooth and very shiny surfaces are obtained.



## EDGE RADIUSING

It is a surface treatment applied to rounding sharp edges and corners and obtaining soft lines in parts such as metal, plastic, wood, depending on the production technologies or processing methods.



## DEGRASING / DESCALING

This process is a surface treatment that is used to remove the undesired oil and dirt layers remaining on the part after pressing or machining processes, especially in metal products. In addition, this process is used to remove the rust layer formed on metal parts that are susceptible to oxidation and are waiting in unprotected environments.



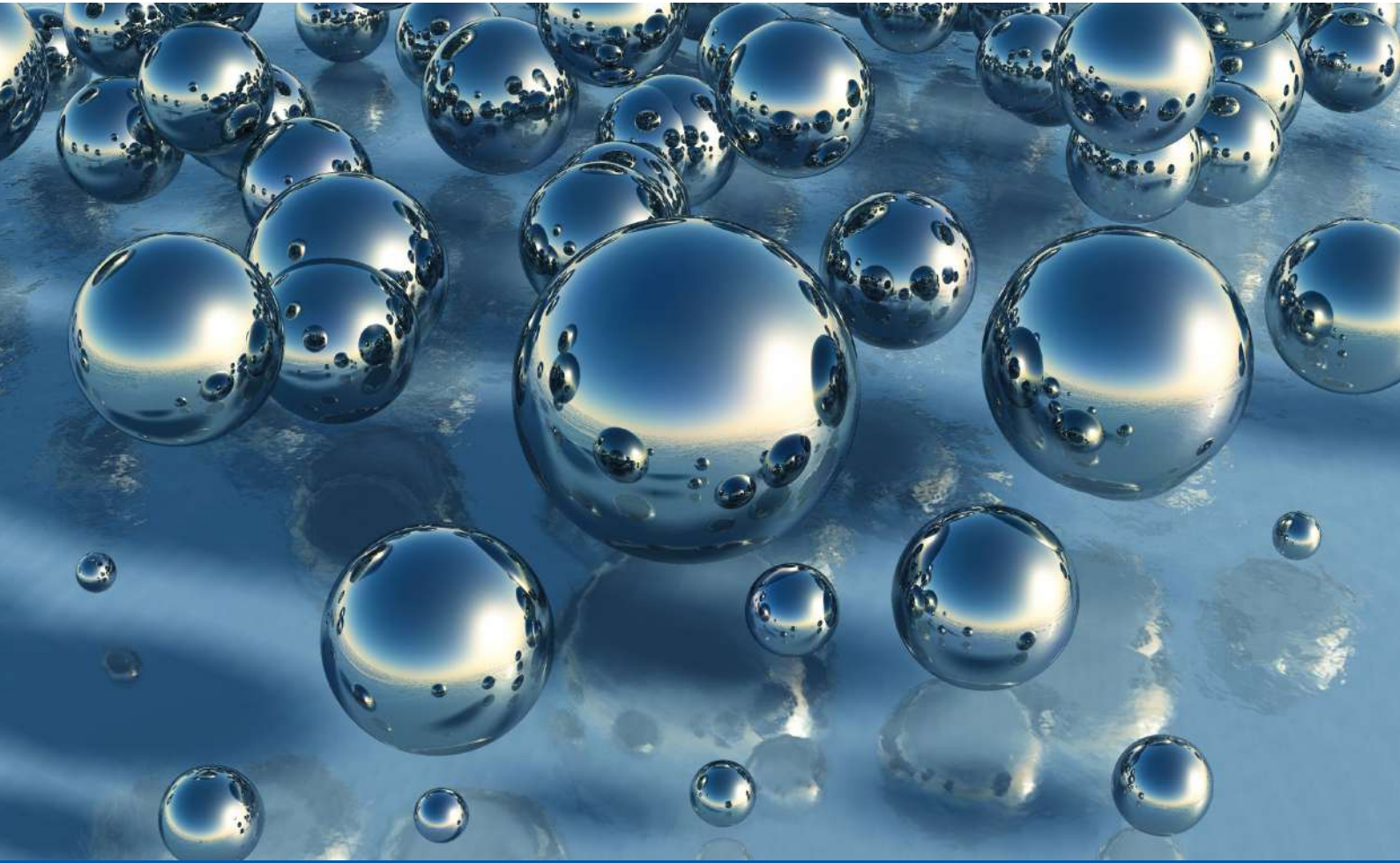
## CLEANING

This process is especially a surface treatment used to remove dust and dirt layers on the surfaces of metal, plastic and wood-based parts. After this process, surfaces that are clean and suitable for the next process (coating, secondary processes, etc.) are obtained.



# KROM-X<sup>®</sup> Process

The shining star of surface finishing



**Eco friendly** surface finishing for mirror finish quality



Kromaş, is one of a few worldwide producers in surface finishing field which carries on many process works in R&D department.

“Surface finishing” solutions are one of the primary problems of industrial production of different sectors.

The Krom-X process which is developed by Kromaş completes other process and cancels electropolishing by taking surface polishing quality to the highest level.

Krom-X<sup>®</sup> process is used for surface finishing of steel, stainless steel, copper, brass, xamak, gold, silver, plastic, semiprecious stones and many other different parts.

# After Sales Services

---

## Installation and Training

Machine installations and operator training are provided by our professional technical team at our customers plants.

## Spare Parts

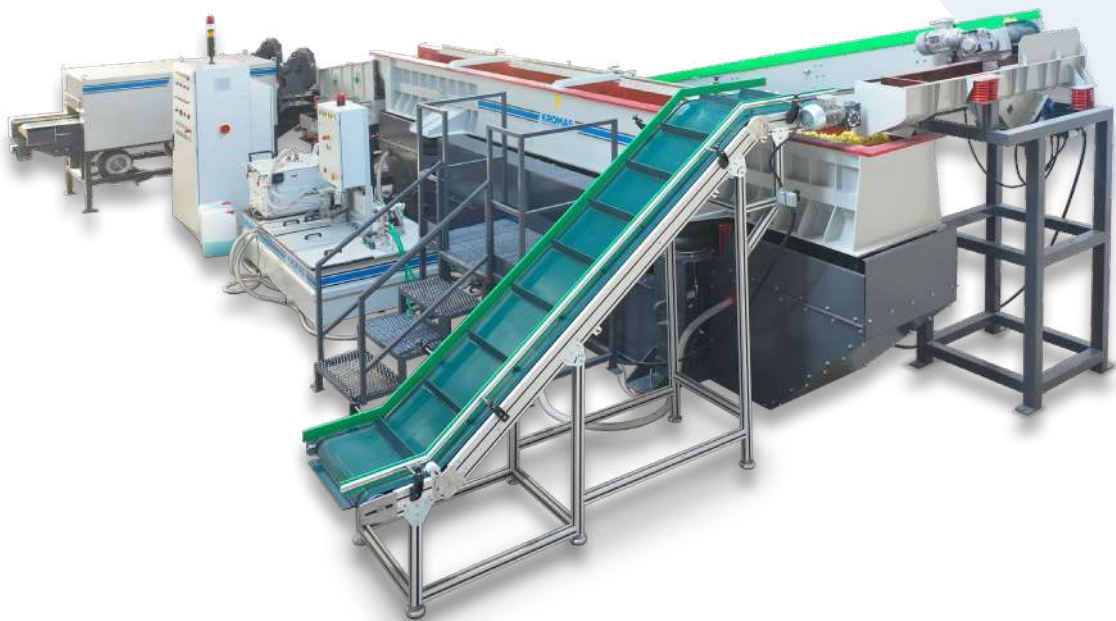
We provide all of the Kromaş machines spare parts to our customers. Parts are either delivered and installed by our own after sales services personnel or shipped to our customer's location fast in order to minimize downtime.

## Maintenance and Repair Service

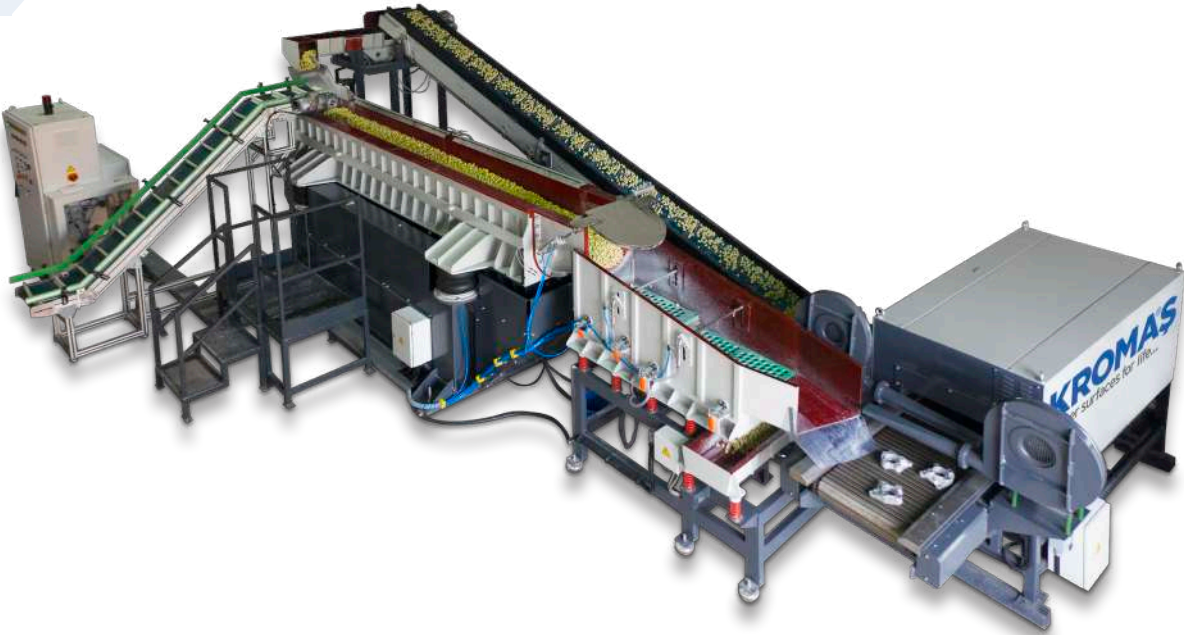
We support our customers with an experienced field service personnel at customers own location as well as our factory.



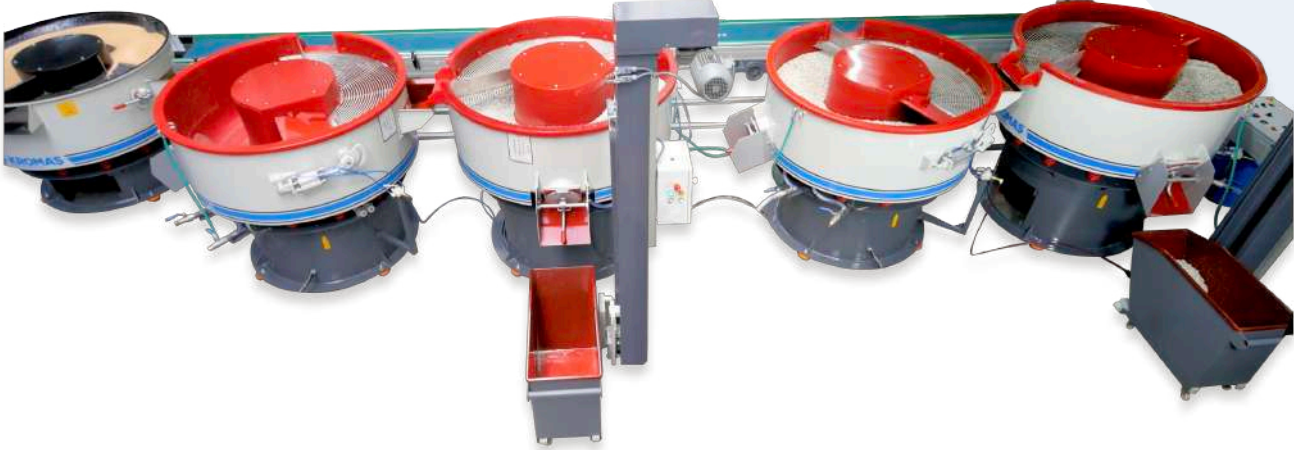
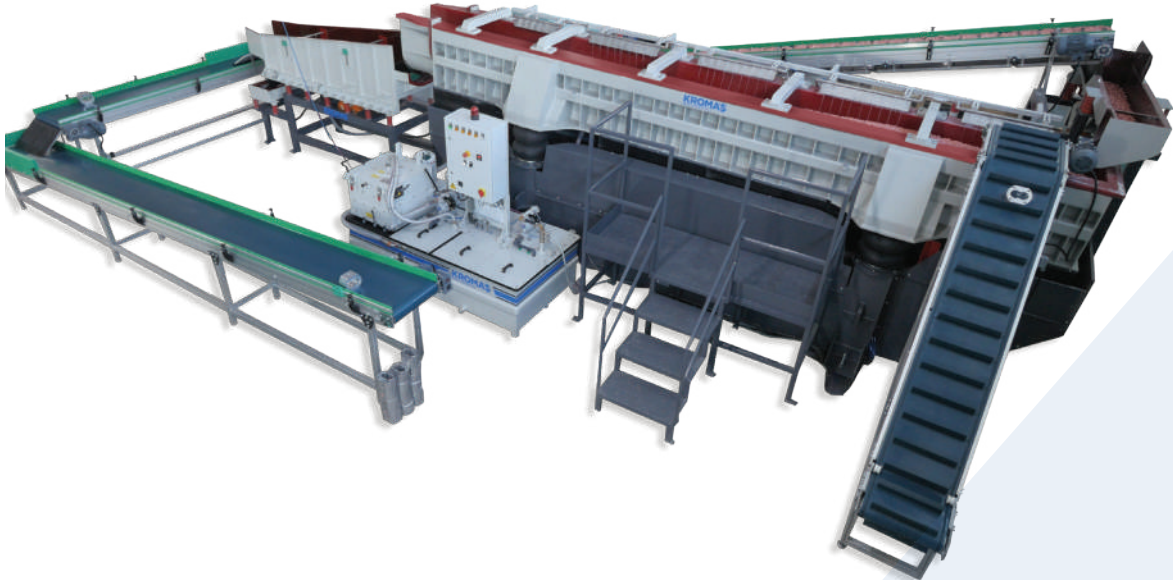
# Vibratory Surface Finishing Systems



# Vibratory Surface Finishing Systems



# Vibratory Surface Finishing Systems



**KROMAŞ**<sup>®</sup>  
Better surfaces for life...

**Kromaş Makine Sanayi ve Ticaret Limited Şirketi**

**Factory:** Mimar Sinan Mah. Mimar Sinan Cad. No:70-1 / 1 Silivri - İstanbul  
info@kromas.com - www.kromas.com.tr

