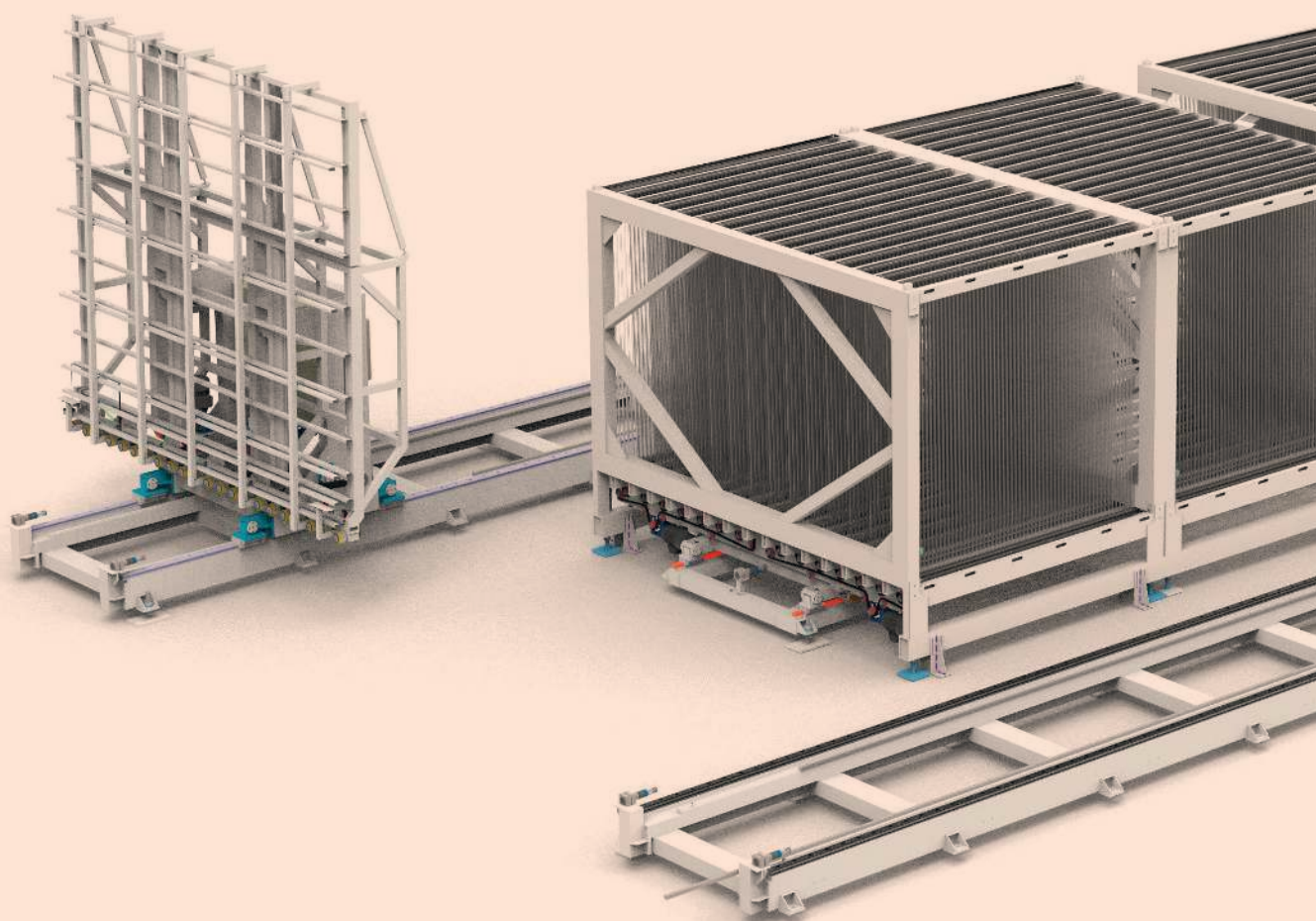
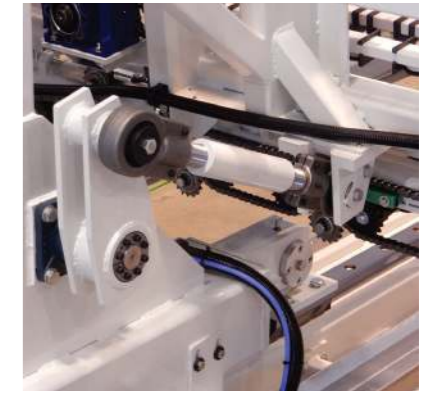
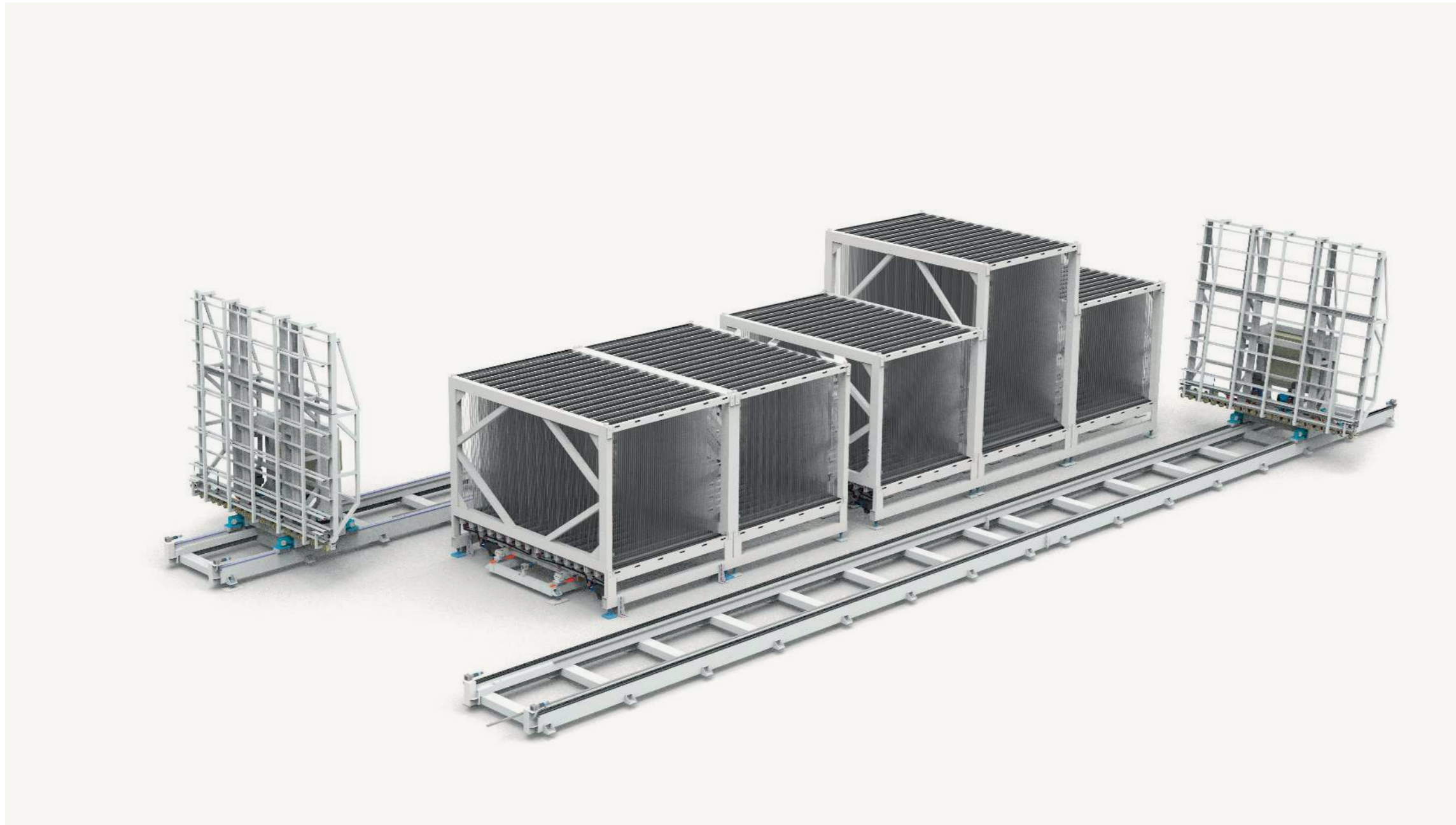


ART. ST3018 ART. SS3028 SORTING SYSTEM

ART. SS IS A COMPLETE SOLUTION FOR THE OPTIMIZATION OF THE PRODUCTION THROUGH AN AUTOMATIC PROCESS OF HANDLING AND STORING WITHIN THE GLASSWORK. THIS SYSTEM FITS BETWEEN THE CUTTING LINES AND OTHER PRODUCTION PROCESSES





It is a highly configurable machine with modules for handling and storing to better satisfy the production requirements of the glasswork and to ensure a high deposit capacity.

The system is interfaced with an arissing (optional), plus a cleaning and quality control upstream which ensures the precise traceability of each piece and the certainty of store to stock material free from defects.

An innovative software allows a real-time view on the state of orders.

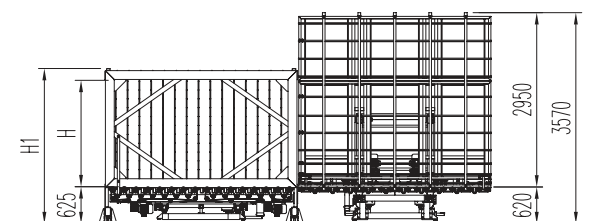
The SS is highly modular and the configuration can be adapted to existing production processes either of Forel trademark or other manufacturers.

Due to glass handling being all automatic, the operator's manual work is reduced to a minimum which means a drastic reduction of risks and greater safety in the work environment.

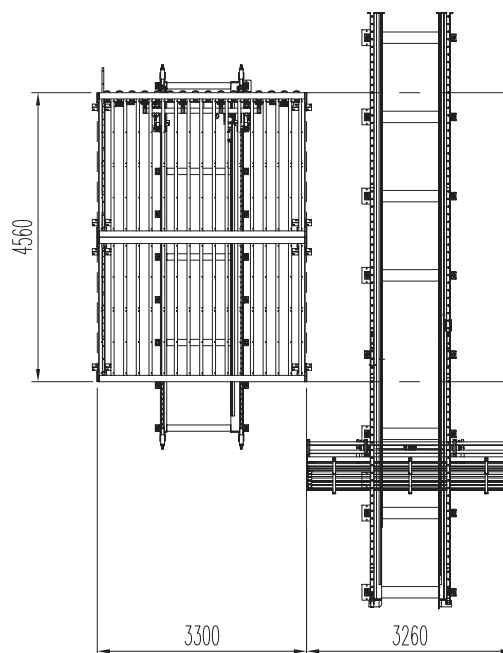
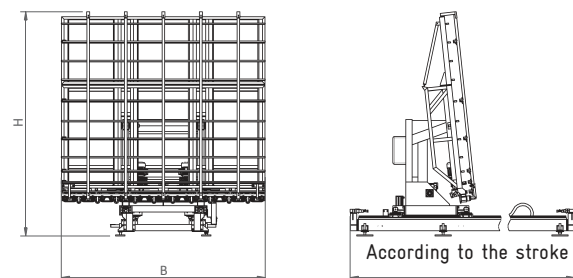
Technical information

	3018	3028	Shuttle model 3028
H	1800	2800	-
H1	2625	3625	-
A1	Rp 1/4" 6 bar	Rp 1/4" 6 bar	-
compressed air	100 Nl/min	100 Nl/min	-
E1	3P+N+E -50/60Hz 400/230V Installed: kW 21 Absorbed maximum: -80%	3P+N+E -50/60Hz 400/230V Installed: kW 21 Absorbed maximum: -80%	-
thermal switch	40 A	40 A	-
processable thickness	-	-	from 3 mm to 12 mm (19 mm on demand)
minimum glass size	600 x 400 mm	600 x 400 mm	600 x 400 mm
maximum glass size	3000 x 1800 mm	3000 x 2800 mm	3000 x 2800 mm
transport speed and translation	-	-	depending on the system configuration
number of slot	56	39	-
load capacity	1500 kg/m ²	1500 kg/m ²	150 kg/m ²
size b x l x h	2280 x 3260 x 2650 mm	2280 x 3260 x 3600 mm	2280 x 3260 mm
weight	3000 kg	3200 kg	5000 kg

Forel reserves the right to change the data in this general description sheet. The machine shown is a mere guideline, it may include optional accessories and vary according to the maximum work height.



Shuttle model 3028



All specifications vary depending on the system configuration in both dimensional and performance terms to best suit the production needs of the glassworks.